



# 以纸为名 赴时代之约

2020 APP (中国) 可持续发展报告





---

02

---

04

APP

04 |

07 |

08 |

09 |

---

14

---

16

---

32

33 |

38 |

39 |

44 |

46 |



2020

" "

2030

2060

APP

"

"

2020

" "

" "

APP

4,239.51

APP

1995

"

APP

"

" "

"

"

APP

2021

"

"

APP

APP

5G

APP

APP

MBOS

APP

2020

# APP

Sinar Mas Group			APP
1962	1938	Asia Pulp & Paper	1972
			APP 1992
		2020	2
		17	27.11
		7	
	"		"
	"		"

2020 APP



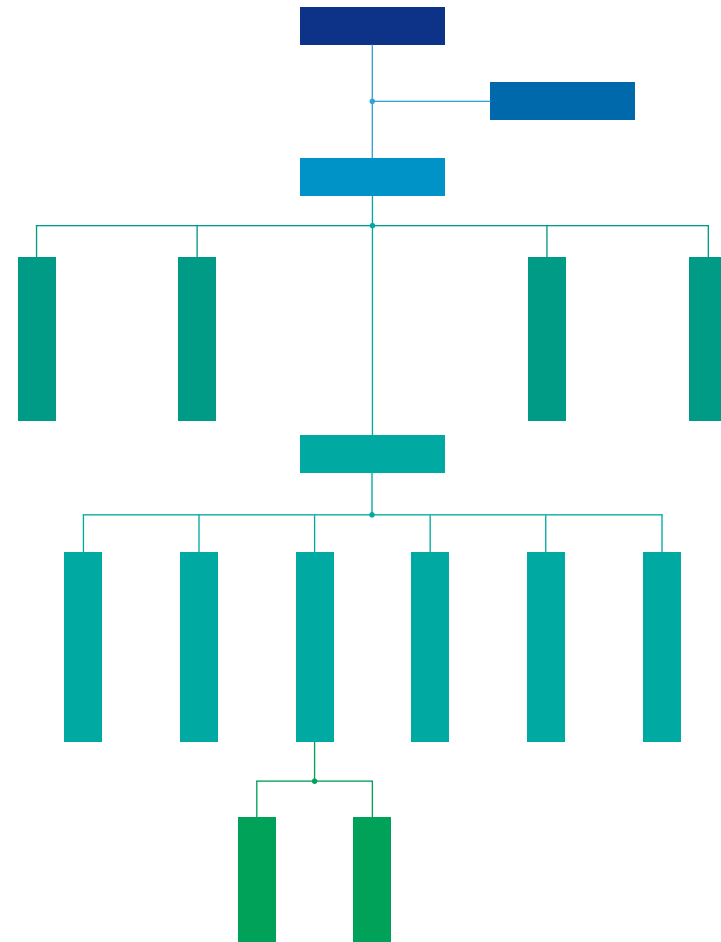
6 160



738



2,480



“

”

2020

” &MBOS

“

”

APP

”



MBOS”

”



“

”

---

APP

APP



APP

2020 APP

APP

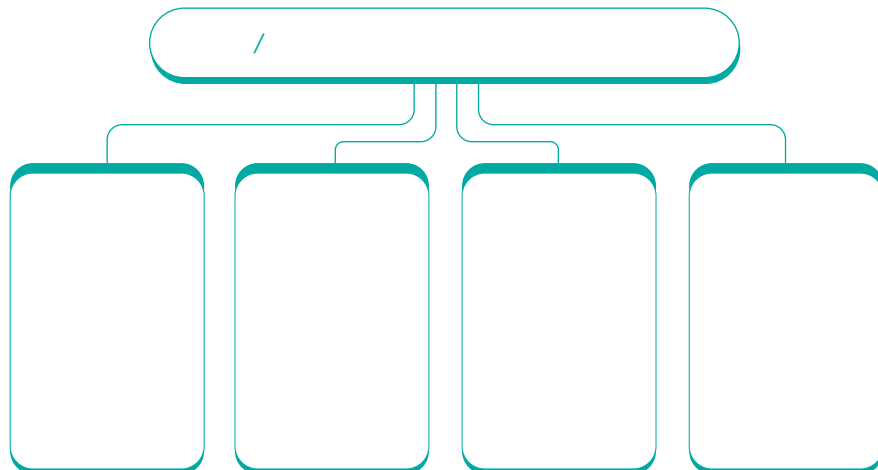
“ ”  
2020 /  
“ ”



APP



APP



2020 11

“ A A ”

2018



2019

500

2020 2022

2020

100

85

2020

100

52

2020

100

35

34

2020 2022

II

2020

2019

2018 " A "

2019

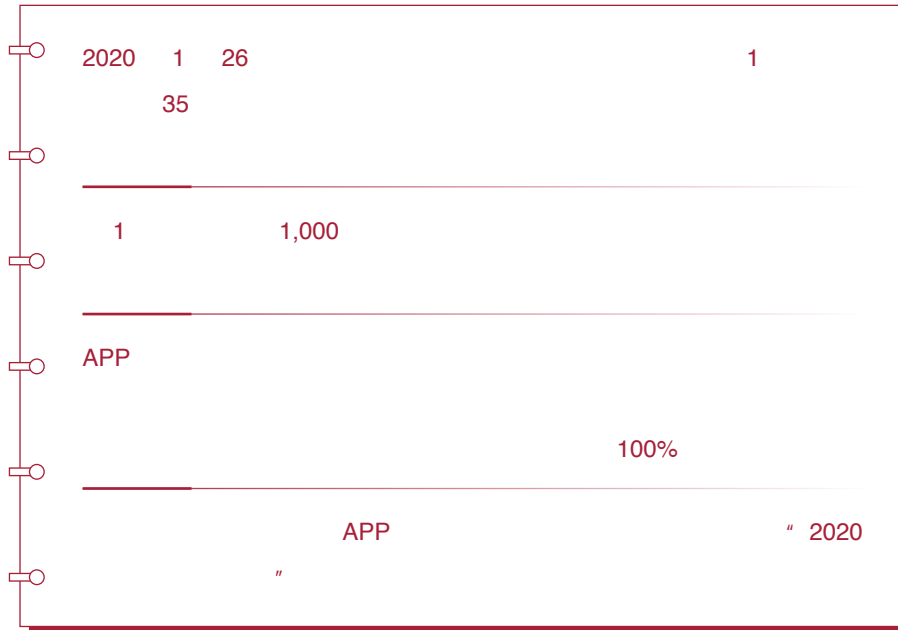
2019 " "





2020

" "



2020

" " " "



2019 APP

12-15





APP

”

”

”

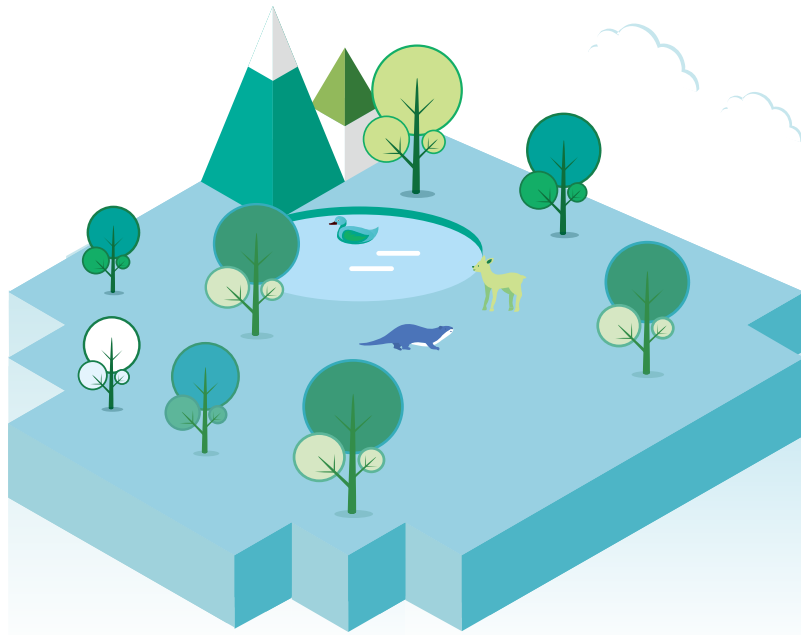
”

”

”

APP

1995



” ”

2020 9

APP

”

”

2020

APP

4,239.51

2020

462.39

APP

”

1995

APP

”

2020

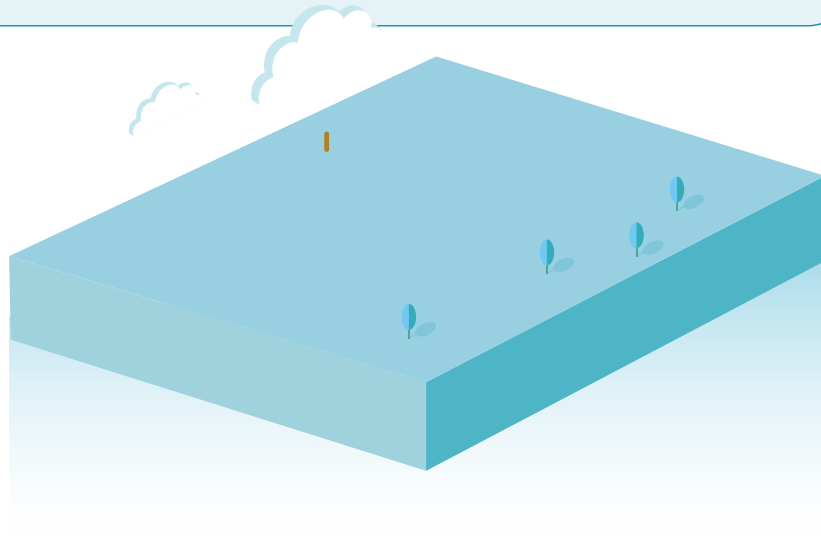
APP

27.11

APP

2019

11 APP



APP  
CFCC/PEFC

ISO14001

CFCC/PEFC-FM ISO14001

"

"

2020

APP

2020 APP  
CFCC

APP

2020 APP

CFCC



CFCC/PEFC

2019 " " " "

" "

2020

2020 CFCC/PEFC 100

APP

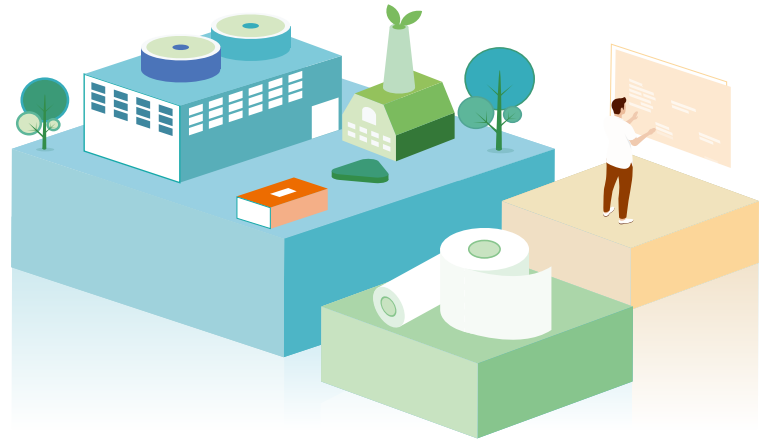
CFCC/PEFC-FM	244,382
CFCC/PEFC-FM	90.12%
APP	CFCC/PEFC-CoC
	15



APP

APP

APP



" " " "

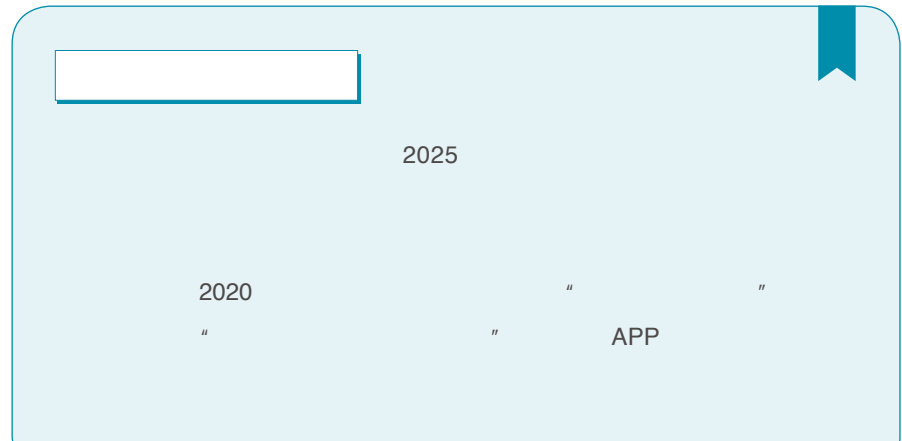
APP

"

"

ISO14001

19

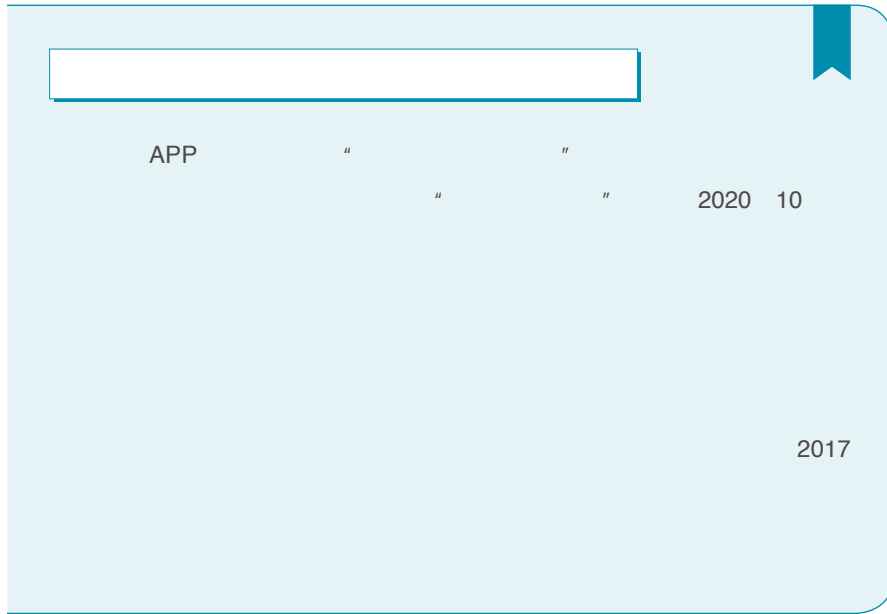


2020 APP

2020

7.31

150

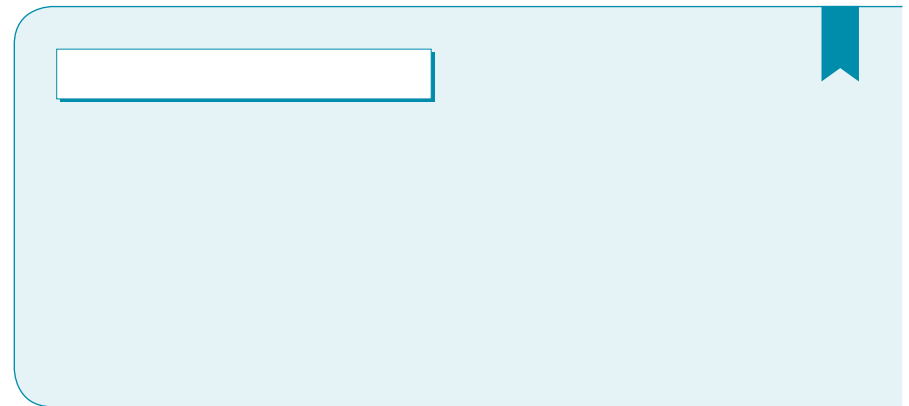
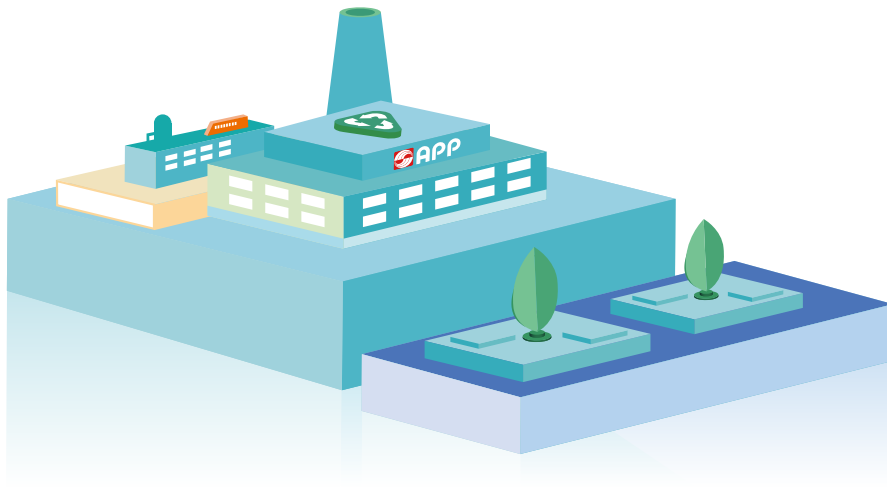


“ ”

2020 APP

APP

“ ”





" "

2018 Foopak Bio Natura  
 220 Foopak  
 24 TÜV 100%



Foopak Bio Natura

2020 " "  
 6  
 0.9 15 12  
 8 100  
 TÜV DIN CERTCO  
 100%  
 APP OPB OPBs  
 WXS " "

APP

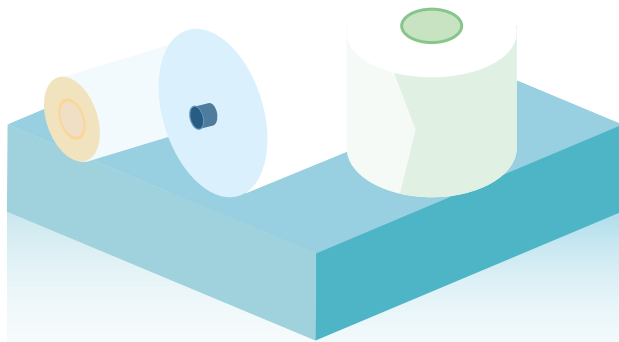
2020



DV1

DV1

“ ”



2020 APP

" "

"

" "

APP

"





APP

APP

2017

2020

1.0 3.0

1.0

2.0

3.0

1.0

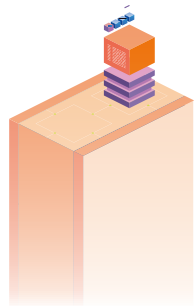
2020

APP

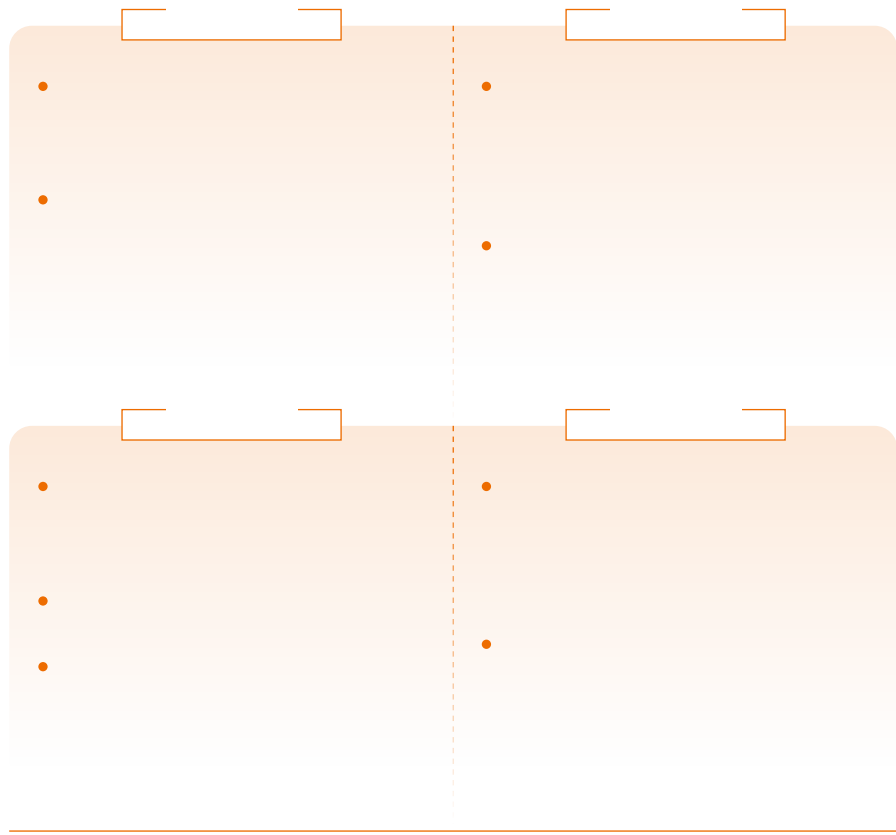
APP

2.0

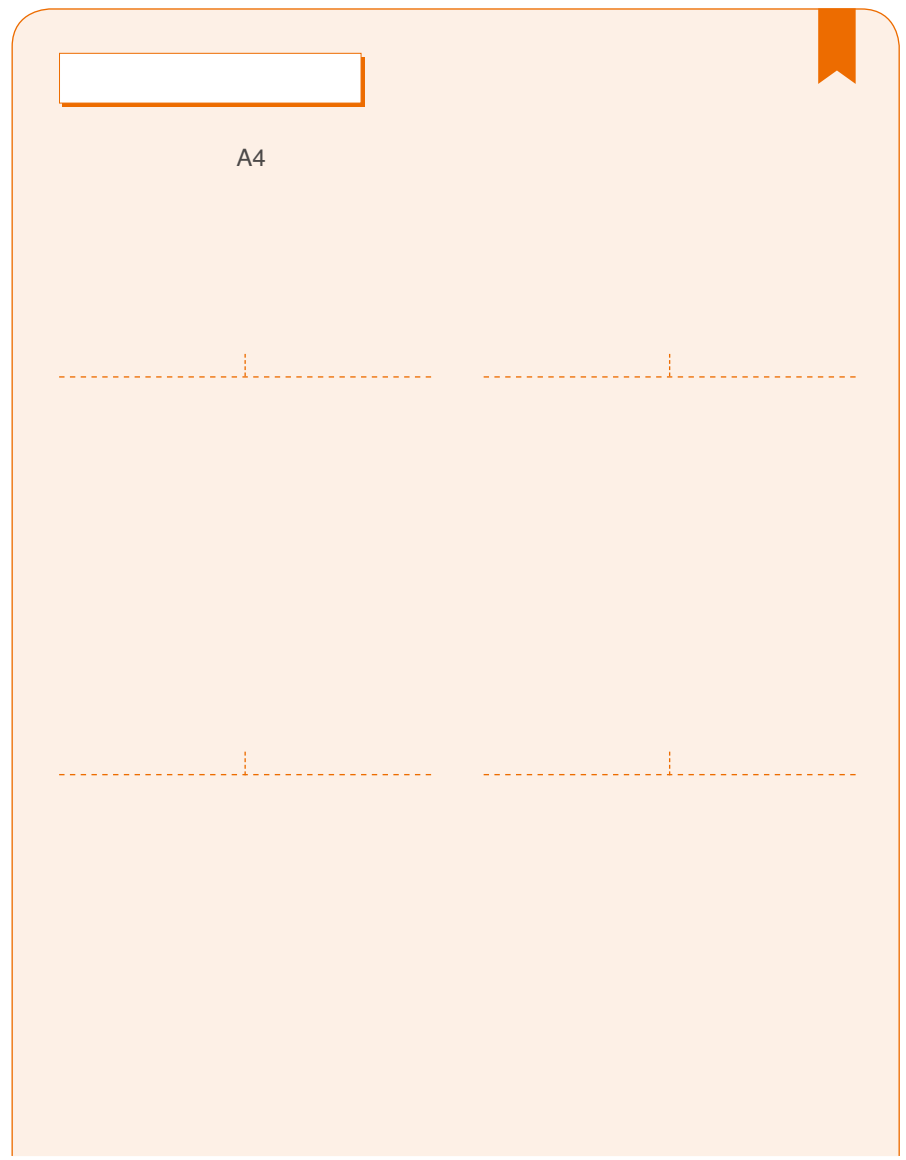
1.0



- 
- 
-



2020



APP

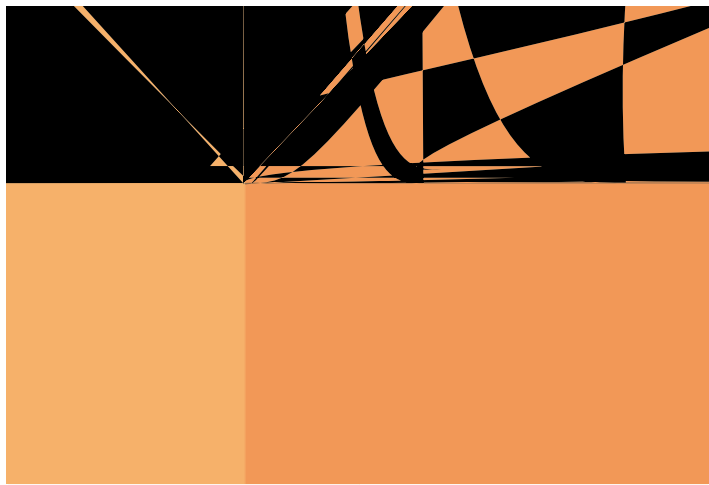


2020 10

RFID

2020 4

10



APP



APP

APP

2019

+

" "

"

SCRM "

SCRM

"

" 2020

6

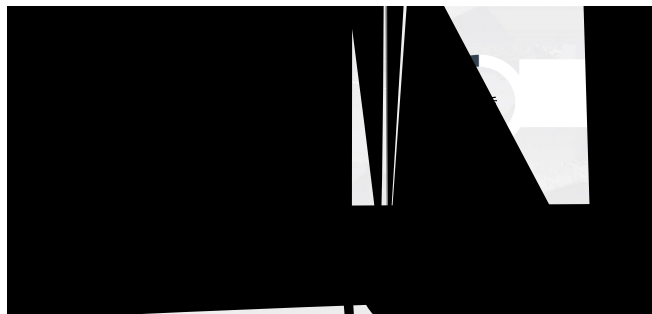
2020

"

"

60

SCRM



2020 6 4 APP

"

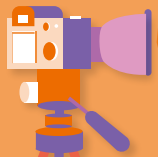
"

APP

60

"

"



APP



APP

27

APP

APP

2020 7 1

“

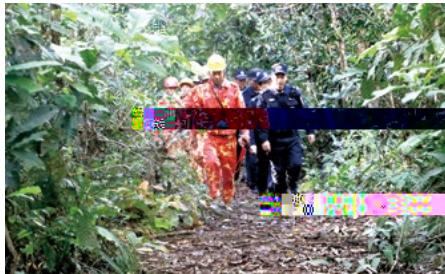
”

APP

APP

“ ”

2020



APP

[Empty box]

2020 APP

29,452 1,118 6,221 1,341



APP

2020

16,424

84.44% 2,284

11.8%

- [Empty box]
- [Empty box]
- [Empty box]
- [Empty box]
- [Empty box]
- [Empty box]
- [Empty box]
- [Empty box]

APP

APP

2020 5 APP

APP

22

3

APP

APP

2020 APP

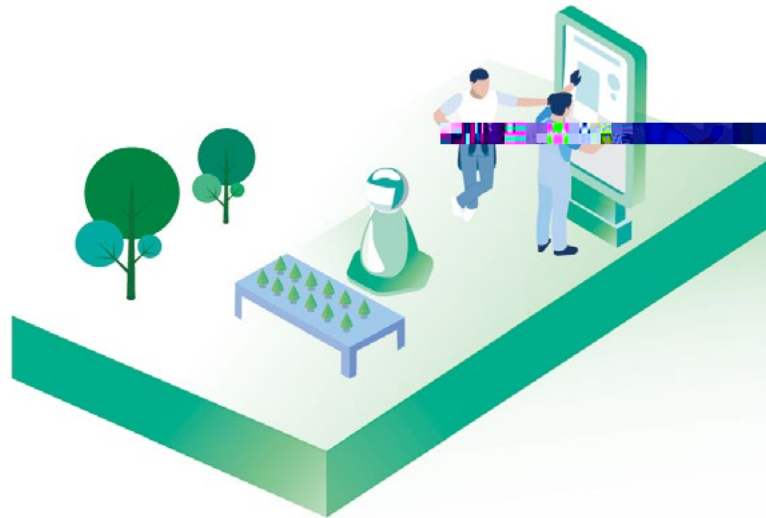
APP

“

”

8

APP



APP



2020 10 APP



1953  
 APP 100  
 2020 9 15 APP "  
 "  
 80 "  
 2020 " APP  
 "



APP

APP

2020

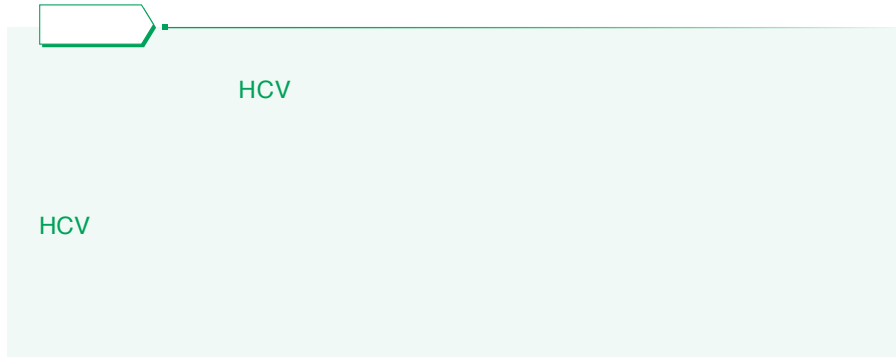
APP

2007

APP



APP



2020 APP

2

APP

APP

HCV

2020



APP

2020

APP

2020

5

2020 APP

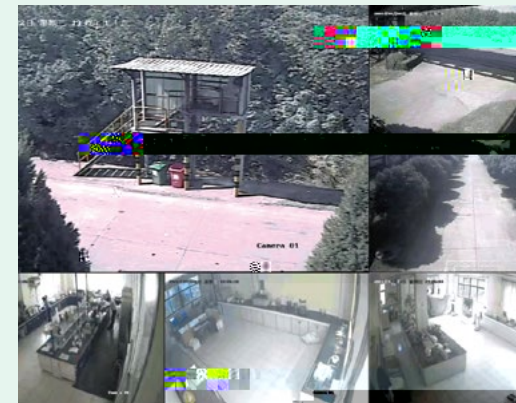
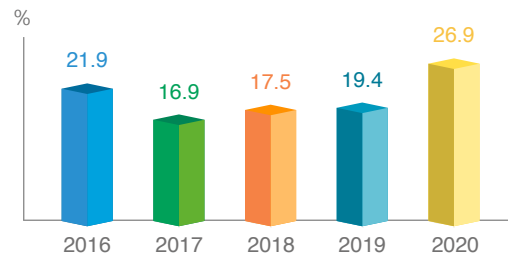
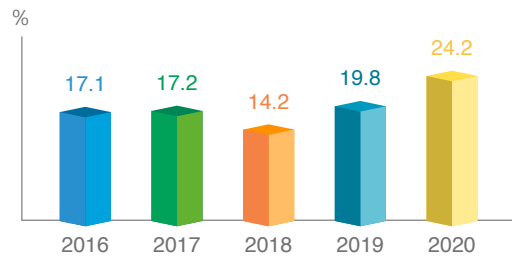
2,356,697

26.9%

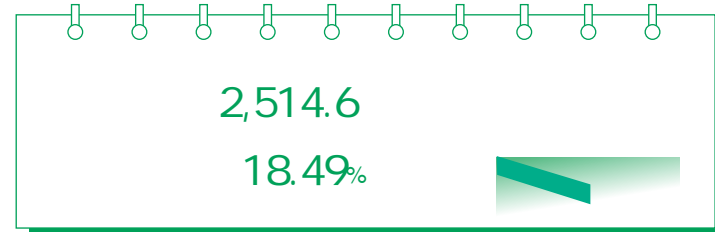
PEFC

1,516,025.14

24.2%



APP



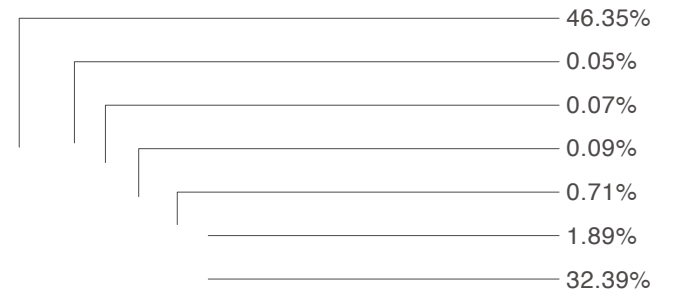
2020

2020

APP

2020

10%~20%



50      1  
8,400  
15,888

\*

94%



[Redacted]	
2020	2,650
	30,903
"	"
2020	" "

[Redacted]	
2020	
101.97%	566.67

2019	" "	2020
APP		APP
		95.63%

[Redacted]	
1997	
	650
	2020
" "	" "
* " "	" " " "

•

•

•

\*

---

•

•

•

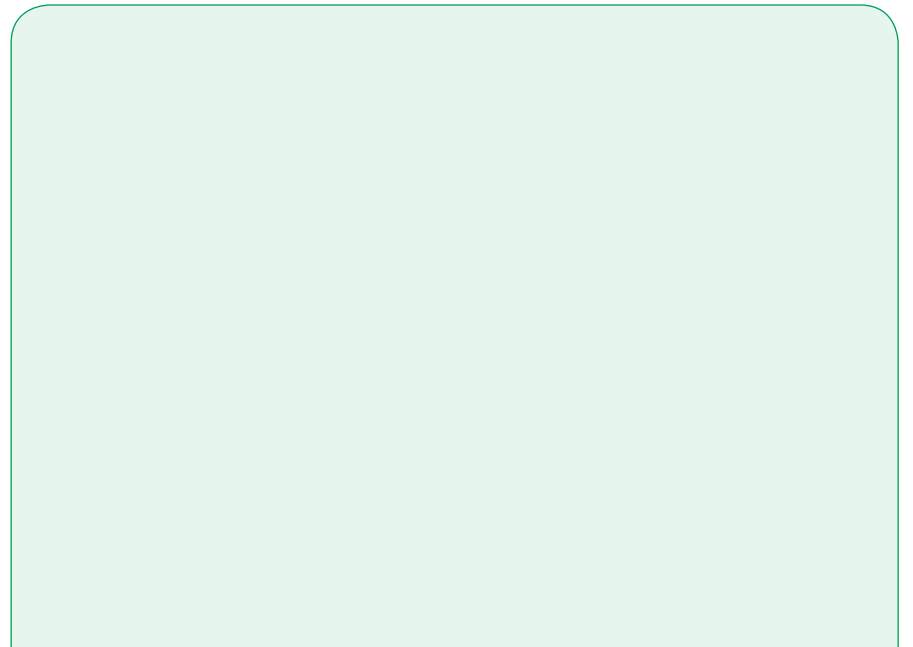
\*

•

\*

•

“ ”



APP

APP

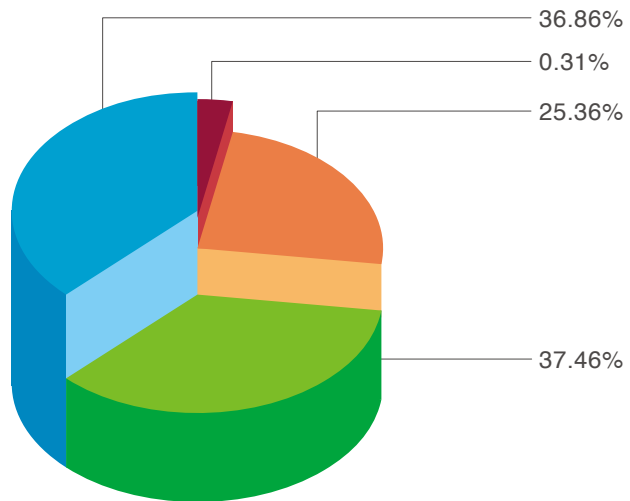
2020 APP  
74.32%

2020



2020  
2021

2020



■ APP  
■ \*  
■ \*  
■ \*

Year	Value 1	Value 2	Value 3
2020	41,140	160	135
2020	31,421		





2020

" "

" " 3

2020

96

12,461

" "




6S

2020

3,815      99.6%

3,830

APP

2020

OHSAS18001

ISO45001

ISO45001

APP

2020

1

" "



APP

2018 APP

"

"

2020 0.064%

2019 18%

APP

2020

APP

[Empty box]

12

139

2020

APP

2018 APP

" A "

2020

" A "

2020 " A "

2,000



" A "







APP

APP

2020 APP

2020 APP  
600



# APP



[Empty box]

PK

47

TTT	
TTT	

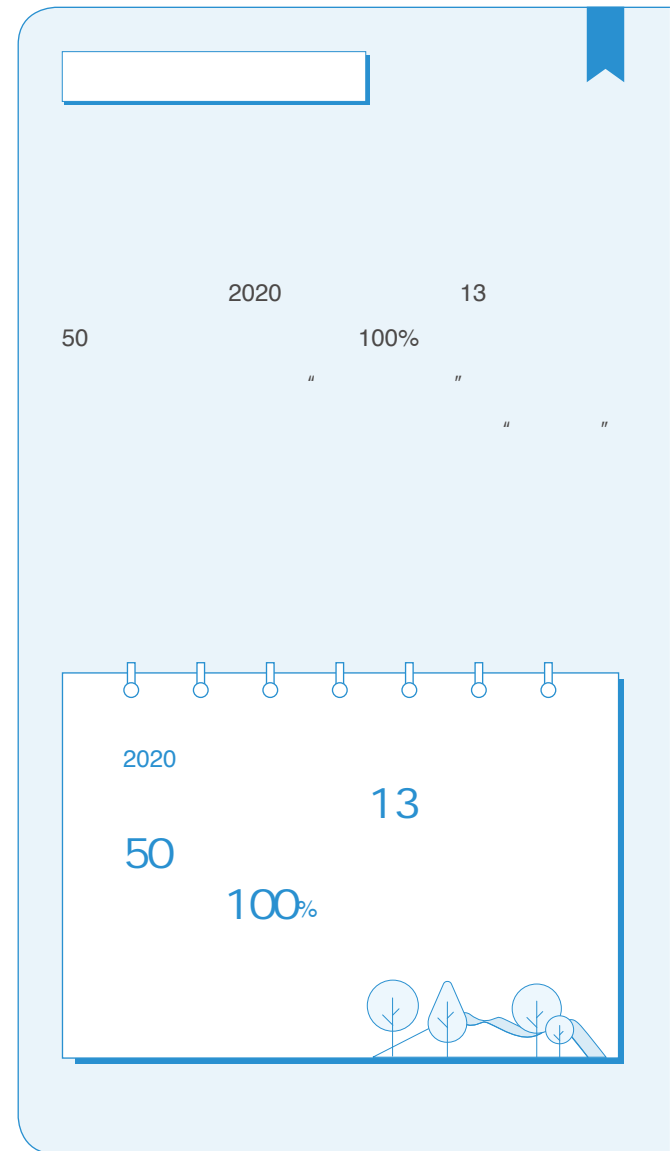
“ ” “ ” “ ”

2020

TTT

2020 9







2020

2019 2020

46



2020



MBOS

APP

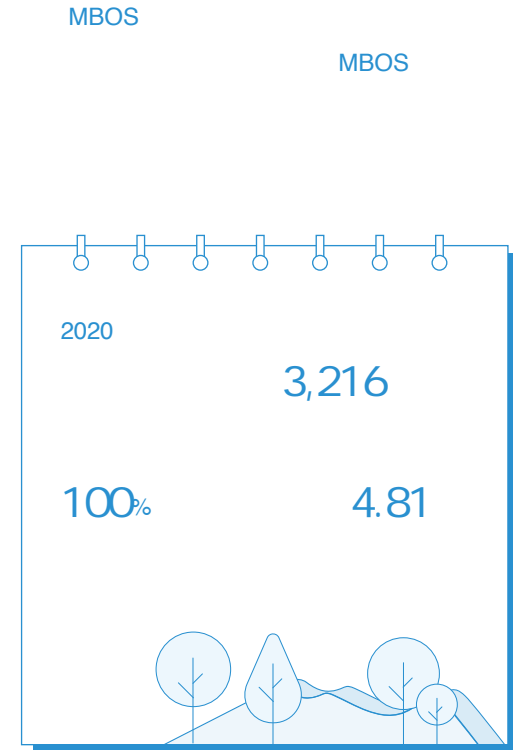
" 2020 6 12  
 " 1,800 /  
 " " 24

" MBOS "  
 MBOS Management By Olympic MBOS MBOS  
 System APP APP

" MBOS" APP  
 APP  
 APP MBOS  
 MBOS 2020 " "  
 " &MBOS" " "

APP  
 APP MBOS  
 MBOS 2020

3,216  
 APP  
 " " 100% 4.81  
 MBOS MBOS MBOS  
 2020 APP



“ ”  
APP 11  
APP

“ ”  
“ ” 21  
“ ”

2020



“ APP ” 11

512

“ APP ”

2010 2020

11



A photograph showing a group of people, mostly young adults, sitting at tables in what appears to be a classroom or meeting room. They are all clapping their hands. In the foreground, a person's hands are visible, also clapping. The background shows other people and some posters on the wall.

[Empty box]

2020

" "

" " " " " "

" " "

" "

2020 20 16 /

APP 12 3



2018

" "

APP

" "

2020

" "

66



" " 2020

APP



[Empty white box with a blue border]

	2011	"	"
2020	3		600
		6	
2,300			



2008

2015

	2020		
38			

	"	"
2020		5
6		9.5
30		



APP

“

2020

5

“ ”



2020

43

900

“

“ ”

“

2020

“

“

“

“



350

“ ”

LED APP



"

"

3 6

2020

37

3,631

2012

APP

2020

100

189

8

"

" "

" "

"

"

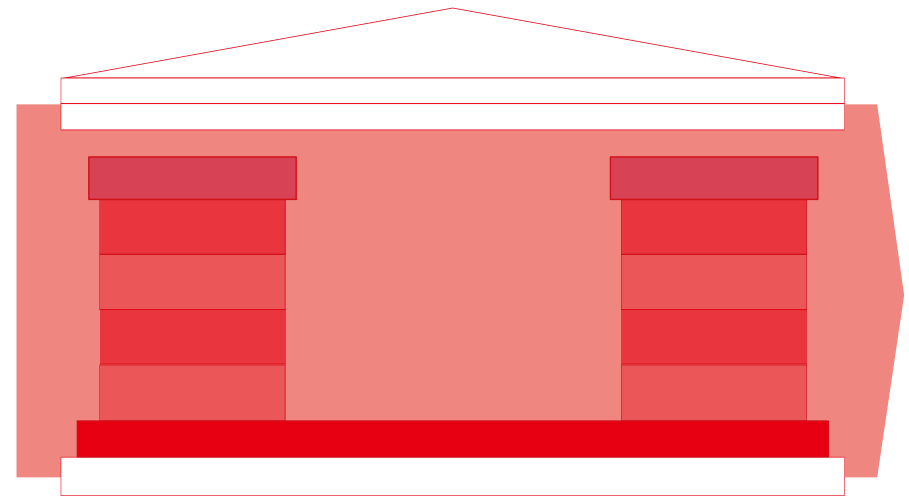
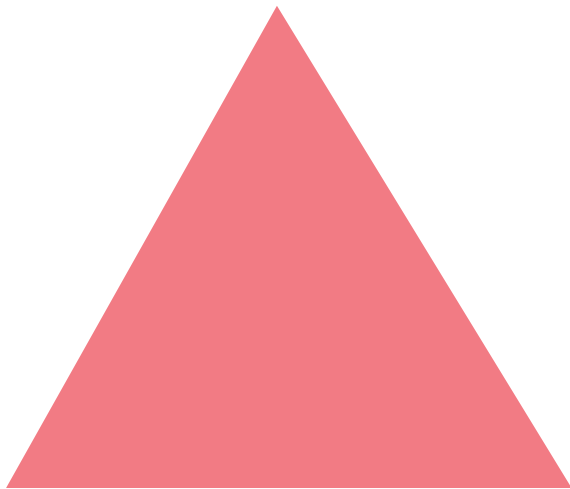
"

APP

IIA

2020  
IT

" " APP  
APP



2020



APP

GRW@app.

com.cn 24  
021-22839763



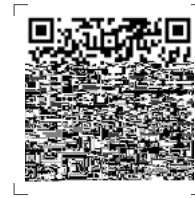
APP

2020

2020 “ ”

APP

APP 2013 " 2020 2020 APP " 2030  
" "  
APP 2030  
19  
2020 18



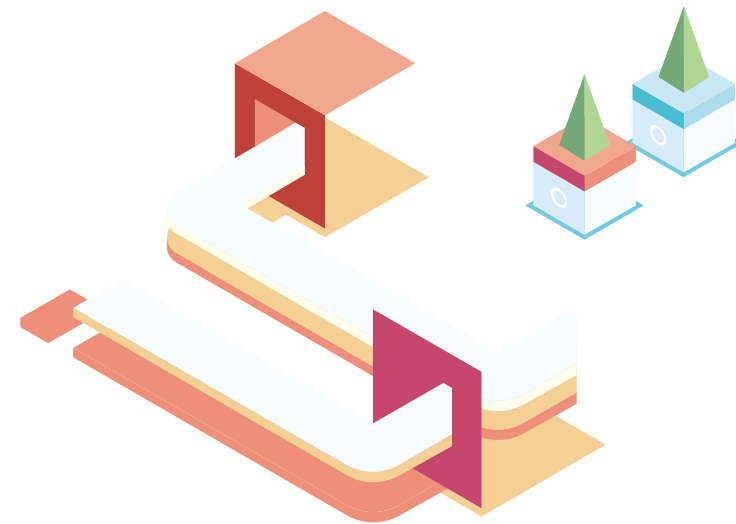
2020



2030


2030



	30%	50	





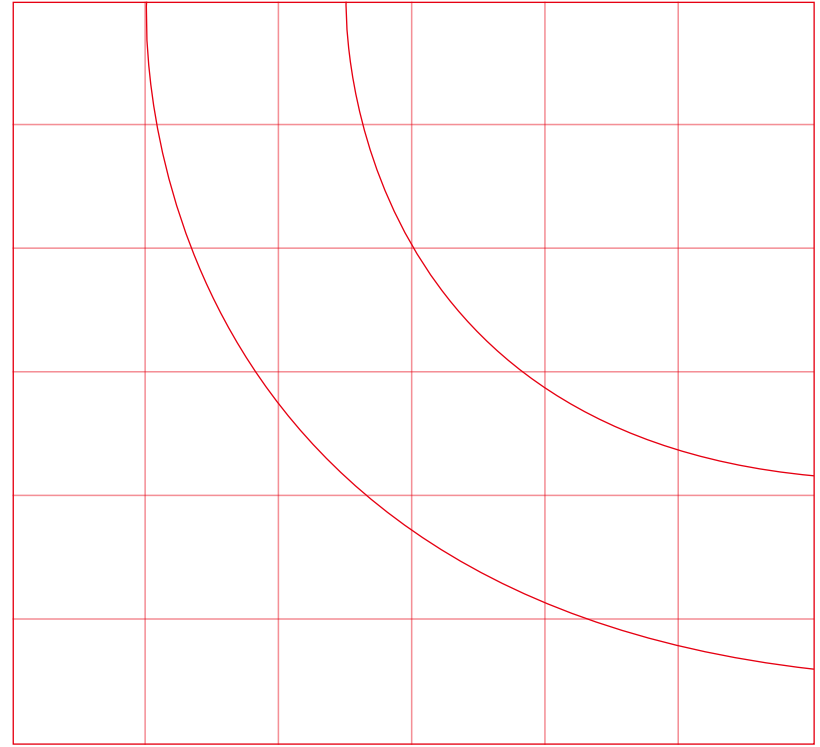


	- - - - - -	- - - - - -
	- - - - - -	- - - - - -
	- - - - - -	- - - - - -

	- - - - - -	- - - - - -
NGOs	- - - - - -	- - - - - -
	- - - - - -	- - - - - -

GRI

SASB  
22  
2019  
"





	2020	2019	2018
	2,480	1,914	1,726
	35	30	30
	738	651	590
	73	48	30
	62	39	23

	2020	2019	2018
	15,544	18,618	31,018
	*	14,579	3,197

\* APP  
APP

## APP

\*

	2020	2019	2018
	18.49%	25.7%	23.9%
	4.23%	1.1%	2.8%
	5.01%	2.8%	1.1%
	28.69%	26.6%	22.7%
	43.25%	43.8%	49.4%
	0.32%		0.1%

	2020	2019	2018
	626.41	564.94	534.38
	151.60	111.88	76.07
	%	24.20	19.80
	%	26.95	19.41
	10.39	19.81	38.19

\*









TUV SUD Certification and Testing  
(China) C



# GRI

GRI		/	
	102-1	4 80	
	102-2	4	
	102-3	6	
	102-4	4 6-7	
	102-5	4	
	102-6	4	
	102-7	4 6 68 71	
	102-8	71	
	102-9	38 68	
	102-10	4 6-7 80	
	102-11	38 60-61	
	102-12	8 63	
	102-13	8-13	
GRI 102	2016		
	102-14	2-3	
	102-15	2-3 14-15 62-63 66-67	
	102-16	60-61	
	102-17	61	
	102-18	4	
	102-40	64-65	
	102-41	49	
	102-42	64-65	
	102-43	64-66	
	102-44	64-67	

GRI			/	
GRI 102	2016	102-45	80	
		102-46	67 80	
		102-47	66-67	
		102-48		
		102-49	80	
		102-50	80	
		102-51	80	
		102-52	80	
		102-53	80	
		102-54 GRI	80	
		102-55 GRI	75-79	
		102-56	73-74	
GRI 103	2016		5 7 14-15	
GRI 201	2016	201-1	4 68	
GRI 103	2016		5 7 14-15 22-28 32-34 37 55 62	
GRI 203	2016	203-2	14-15 22-28 37 55 59 68	
GRI 103	2016		38	
GRI 204	2016	204-1	68	
GRI 103	2016		38 60-61	
GRI 205	2016	205-2	72	
GRI 103	2016		38 43	
GRI 301	2016	301-1	68	
		301-2	68	
GRI 103	2016		20-21 39-40 62-63	
GRI 302	2016	302-1	39 69	
		302-4	39-40	

GRI			/	
GRI 103	2016		20-21	39-41
GRI 303	2018	303-1	40-42	
		303-2	41-42	
		303-3	69	
		303-4	41	69
		303-5	40	69
GRI 103	2016		17	33 36-37 62-63
GRI 304	2016	304-1	36-37	
		304-2	36-37	
GRI 103	2016		20-21	39 41-42 62-63
GRI 305	2016	305-5	21	39-40
		305-7	NOx	SOx
GRI 103	2016		20-21	39 41-42 62-63
GRI 306	2016	306-1	69	
		306-2	42	70
		306-3		
GRI 103	2016		20-21	41-42
GRI 307	2016	307-1	70	
GRI 103	2016		38	
GRI 308	2016	308-1	38	
		308-2	38	
GRI 103	2016		49	62-63
GRI 401	2016	401-1	71	
		401-2	49	52-53
		401-3	71	

GRI		/	
GRI 103	2016	44-45	62-63
GRI 403	2018	403-1	45
		403-2	44-45
		403-3	45
		403-4	45
		403-5	44-45 72
		403-6	45
		403-7	44-45
		403-8	44-45 63
		403-9	72
GRI 103	2016	28	49
GRI 404	2016	404-1	72
		404-2	49-52 72
GRI 103	2016	49	
GRI 405	2016	405-1	72
GRI 103	2016	38	49
GRI 406	2016	406-1	
GRI 103	2016	38	49
GRI 408	2016	408-1	38
GRI 103	2016	38	49
GRI 409	2016	409-1	38
GRI 103	2016	33 37 55	62-63
GRI 413	2016	413-1	37 55-58
		413-2	33 36-37

GRI		/	
GRI 103	2016		38 44 61
GRI 414	2016	414-1	38 61
		414-2	38 44-45
GRI 103	2016		14-15 24 46-47
GRI 416	2016	416-1	14-15 24 46
		416-2	
GRI 103	2016		18-19
GRI 417	2016	417-1	18-19 63

1			37-38 44-45 49-53 55-58 62-63 71-72
2			37-38 44-45 49-53 62-63
3			49
4			38 49
5			38 49
6			38 62-63
7			17-25 33-43 62-63 68-70
8			17-25 27-30 33-43 62-63
9			22-25 39-43
10			38 60-61 72





