



APP-C

D

2016

A. 1.1.1.1

Die Funktion $f: \mathbb{R} \rightarrow \mathbb{R}$ ist durch $f(x) = x^2 + 2x + 1$ für alle $x \in \mathbb{R}$ definiert. Berechnen Sie $f'(x)$ für alle $x \in \mathbb{R}$.

Lösung: Die Ableitung von $f(x) = x^2 + 2x + 1$ ist $f'(x) = 2x + 2$ für alle $x \in \mathbb{R}$.

A. 1.1.1.2

Die Funktion $f: \mathbb{R} \rightarrow \mathbb{R}$ ist durch $f(x) = x^3 - 3x^2 + 2x - 1$ für alle $x \in \mathbb{R}$ definiert. Berechnen Sie $f'(x)$ für alle $x \in \mathbb{R}$.

Lösung: Die Ableitung von $f(x) = x^3 - 3x^2 + 2x - 1$ ist $f'(x) = 3x^2 - 6x + 2$ für alle $x \in \mathbb{R}$.

A. 1.1.1.3

Die Funktion $f: \mathbb{R} \rightarrow \mathbb{R}$ ist durch $f(x) = x^4 - 2x^3 + x^2 - 5x + 7$ für alle $x \in \mathbb{R}$ definiert. Berechnen Sie $f'(x)$ für alle $x \in \mathbb{R}$.

Lösung: Die Ableitung von $f(x) = x^4 - 2x^3 + x^2 - 5x + 7$ ist $f'(x) = 4x^3 - 6x^2 + 2x - 5$ für alle $x \in \mathbb{R}$.

A. 1.1.1.4

Die Funktion $f: \mathbb{R} \rightarrow \mathbb{R}$ ist durch $f(x) = x^5 - 3x^4 + 2x^3 - x^2 + 4x - 1$ für alle $x \in \mathbb{R}$ definiert. Berechnen Sie $f'(x)$ für alle $x \in \mathbb{R}$.

Lösung: Die Ableitung von $f(x) = x^5 - 3x^4 + 2x^3 - x^2 + 4x - 1$ ist $f'(x) = 5x^4 - 12x^3 + 6x^2 - 2x + 4$ für alle $x \in \mathbb{R}$.

Die Funktion $f: \mathbb{R} \rightarrow \mathbb{R}$ ist durch $f(x) = x^6 - 4x^5 + 3x^4 - 2x^3 + x^2 - 7x + 8$ für alle $x \in \mathbb{R}$ definiert. Berechnen Sie $f'(x)$ für alle $x \in \mathbb{R}$.

Lösung: Die Ableitung von $f(x) = x^6 - 4x^5 + 3x^4 - 2x^3 + x^2 - 7x + 8$ ist $f'(x) = 6x^5 - 20x^4 + 12x^3 - 6x^2 + 2x - 7$ für alle $x \in \mathbb{R}$.

Die Funktion $f: \mathbb{R} \rightarrow \mathbb{R}$ ist durch $f(x) = x^7 - 5x^6 + 4x^5 - 3x^4 + 2x^3 - x^2 + 6x - 9$ für alle $x \in \mathbb{R}$ definiert. Berechnen Sie $f'(x)$ für alle $x \in \mathbb{R}$.

Lösung: Die Ableitung von $f(x) = x^7 - 5x^6 + 4x^5 - 3x^4 + 2x^3 - x^2 + 6x - 9$ ist $f'(x) = 7x^6 - 30x^5 + 20x^4 - 12x^3 + 6x^2 - 2x + 6$ für alle $x \in \mathbb{R}$.

Die Funktion $f: \mathbb{R} \rightarrow \mathbb{R}$ ist durch $f(x) = x^8 - 6x^7 + 5x^6 - 4x^5 + 3x^4 - 2x^3 + x^2 - 8x + 10$ für alle $x \in \mathbb{R}$ definiert. Berechnen Sie $f'(x)$ für alle $x \in \mathbb{R}$.

Lösung: Die Ableitung von $f(x) = x^8 - 6x^7 + 5x^6 - 4x^5 + 3x^4 - 2x^3 + x^2 - 8x + 10$ ist $f'(x) = 8x^7 - 42x^6 + 30x^5 - 20x^4 + 12x^3 - 6x^2 + 2x - 8$ für alle $x \in \mathbb{R}$.

A. 1.1.2

Die Funktion $f: \mathbb{R} \rightarrow \mathbb{R}$ ist durch $f(x) = x^2 + 2x + 1$ für alle $x \in \mathbb{R}$ definiert. Berechnen Sie $f'(x)$ für alle $x \in \mathbb{R}$.

- $f'(x) = 2x + 2$
- $f'(0) = 2$
- $f'(1) = 4$
- $f'(2) = 6$
- $f'(3) = 8$
- $f'(4) = 10$
- $f'(5) = 12$
- $f'(6) = 14$
- $f'(7) = 16$
- $f'(8) = 18$
- $f'(9) = 20$
- $f'(10) = 22$

Core Part

2025年1-6月，公司实现营业收入161.83亿元，同比增长1.2%；归属于上市公司股东的净利润为47.4亿元，同比增长1.2%。报告期内，公司坚持“以客户为中心，以市场为导向”的经营理念，持续加大研发投入，不断提升产品竞争力，实现营业收入稳步增长。同时，公司积极拓展海外市场，提升品牌影响力，实现海外收入同比增长4.4%。报告期内，公司还积极推进数字化转型，提升运营效率，为公司的可持续发展奠定了坚实基础。

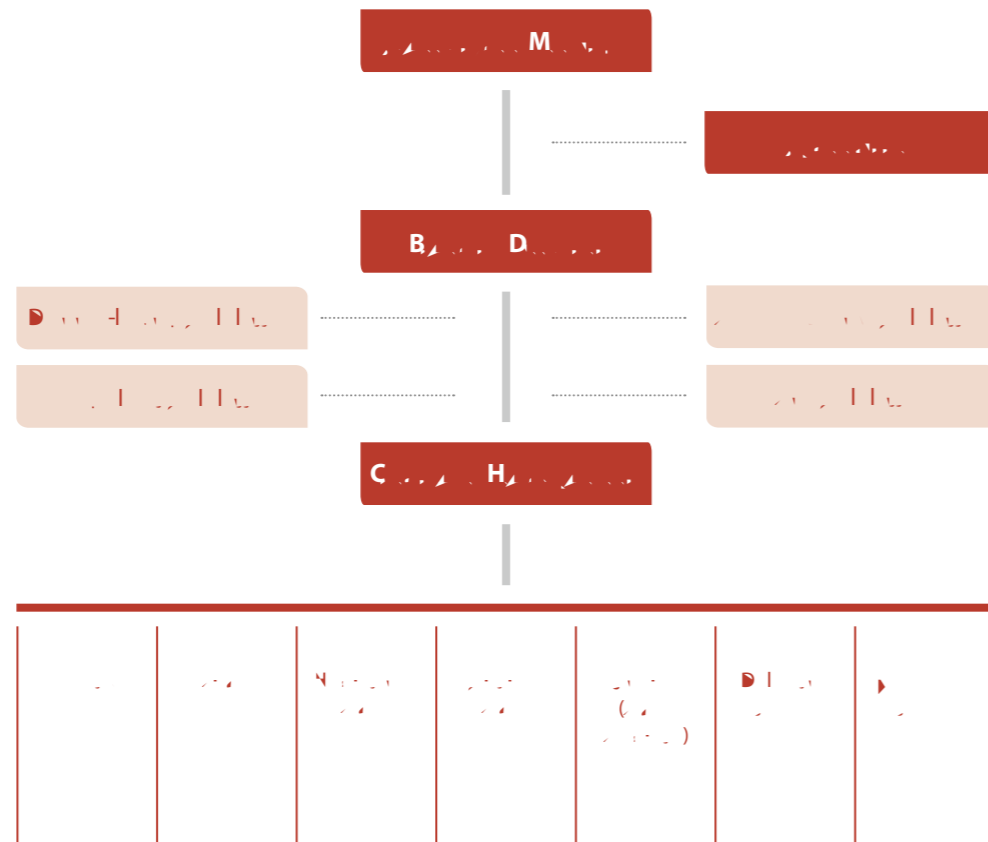
2025年1-6月，公司实现营业收入161.83亿元，同比增长1.2%；归属于上市公司股东的净利润为47.4亿元，同比增长1.2%。报告期内，公司坚持“以客户为中心，以市场为导向”的经营理念，持续加大研发投入，不断提升产品竞争力，实现营业收入稳步增长。同时，公司积极拓展海外市场，提升品牌影响力，实现海外收入同比增长4.4%。报告期内，公司还积极推进数字化转型，提升运营效率，为公司的可持续发展奠定了坚实基础。

营业收入
201
161.83

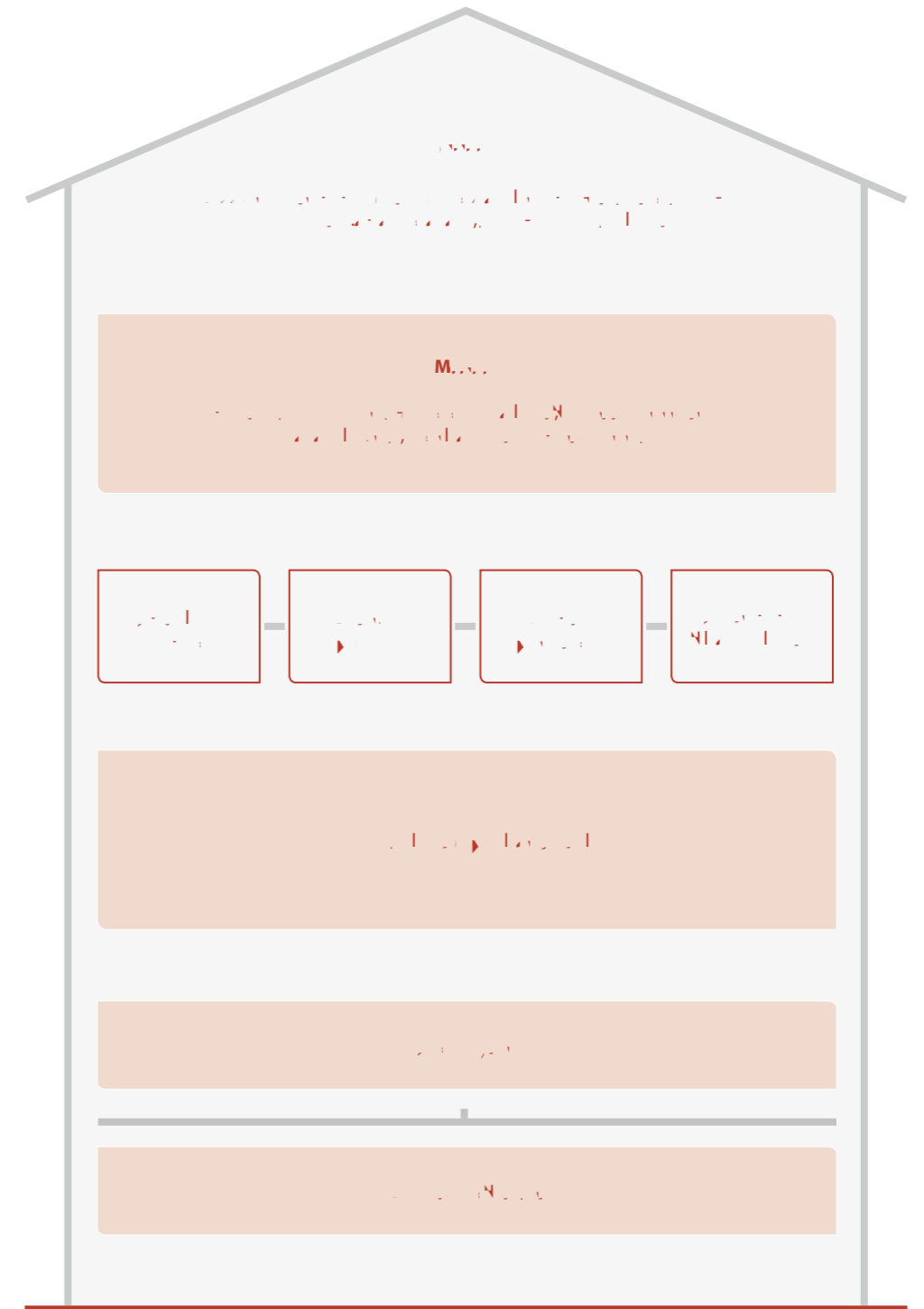
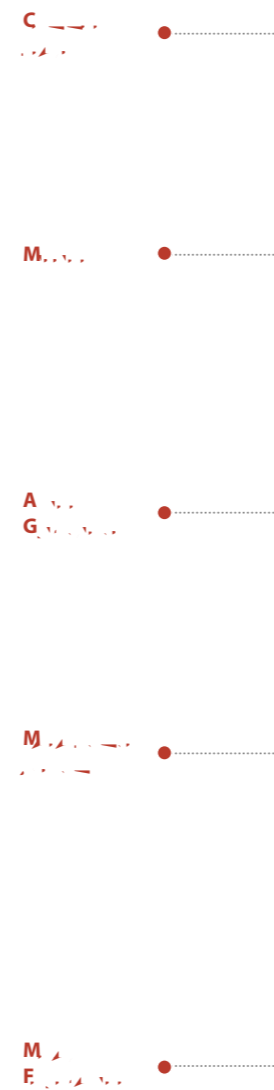
净利润
201
47.4

研发投入
201
33,000

Organization



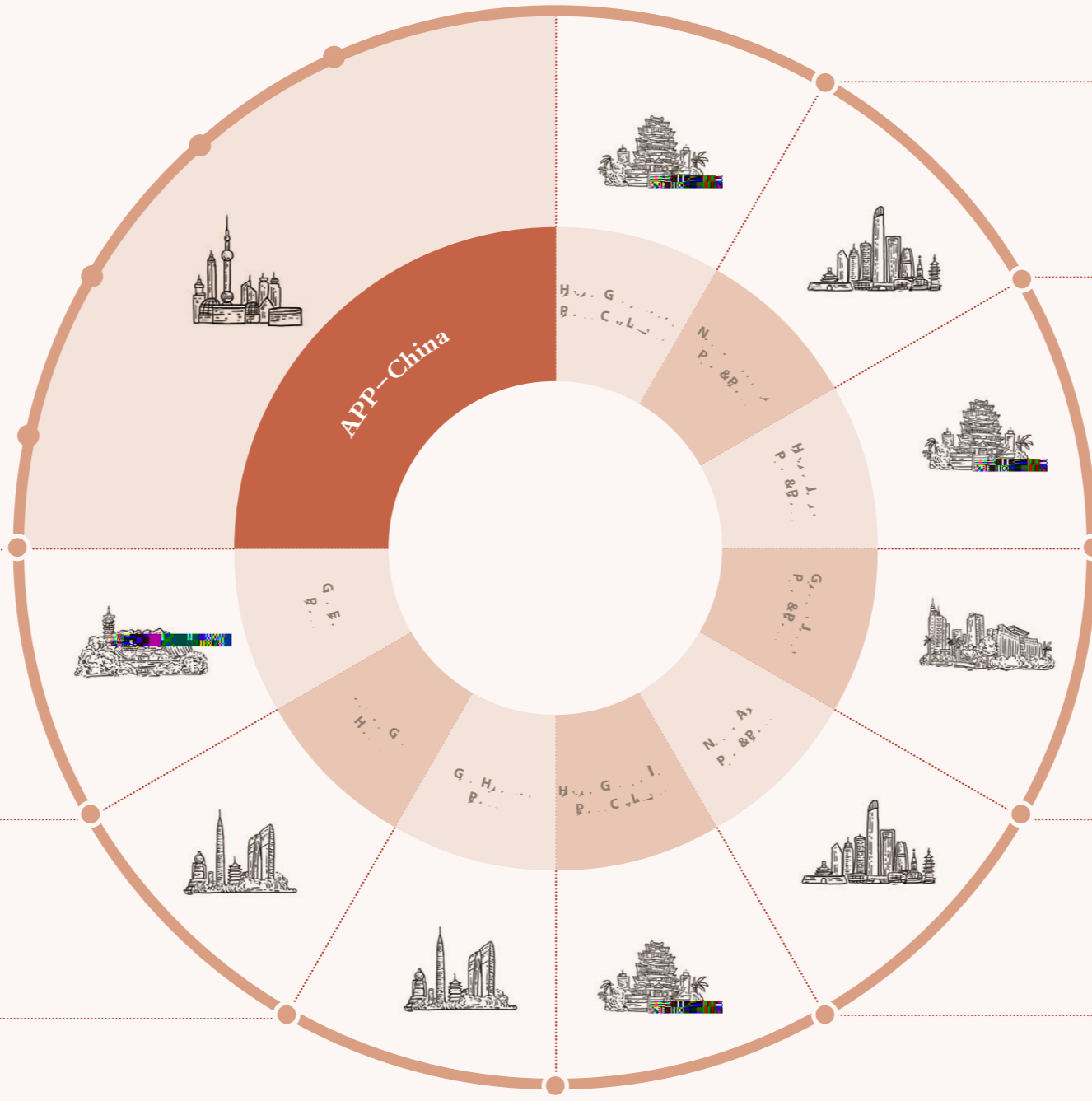
Business Model



A & H



1. 中国对外投资合作发展报告	2. 中国对外投资合作发展报告
3. 中国对外投资合作发展报告	4. 中国对外投资合作发展报告
5. 中国对外投资合作发展报告	6. 中国对外投资合作发展报告
7. 中国对外投资合作发展报告	8. 中国对外投资合作发展报告
9. 中国对外投资合作发展报告	10. 中国对外投资合作发展报告



- 中国对外投资合作发展报告
- 中国对外投资合作发展报告
- 500, 中国对外投资合作发展报告
- 10, 中国对外投资合作发展报告
- 100, 中国对外投资合作发展报告
- 44, 中国对外投资合作发展报告

中国对外投资合作发展报告

- 中国对外投资合作发展报告
- 中国对外投资合作发展报告
- 中国对外投资合作发展报告

中国对外投资合作发展报告

中国对外投资合作发展报告

- 中国对外投资合作发展报告
- 中国对外投资合作发展报告
- 10, 中国对外投资合作发展报告
- 100, 中国对外投资合作发展报告
- 中国对外投资合作发展报告

- 中国对外投资合作发展报告
- 中国对外投资合作发展报告
- 中国对外投资合作发展报告
- 中国对外投资合作发展报告
- 10, 中国对外投资合作发展报告

中国对外投资合作发展报告

- 中国对外投资合作发展报告
- 100, 中国对外投资合作发展报告
- 中国对外投资合作发展报告

D M

APP-中国作为全球领先的造纸和纸浆制造商，多年来一直秉持可持续发展战略。在为消费者提供高质量纸产品的同时，我们也致力于解决日益增长的对纸的需求与环境保护和资源短缺之间的矛盾。APP-中国将继续通过分享经验、交流技术、传播 expertise，引领同行采取“绿色发展”方式，驱动造纸制造商成为解决资源短缺、环境污染、经济挑战等问题的规划者和实践者。

APP-中国将继续通过分享经验、交流技术、传播 expertise，引领同行采取“绿色发展”方式，驱动造纸制造商成为解决资源短缺、环境污染、经济挑战等问题的规划者和实践者。

APP-中国将继续通过分享经验、交流技术、传播 expertise，引领同行采取“绿色发展”方式，驱动造纸制造商成为解决资源短缺、环境污染、经济挑战等问题的规划者和实践者。

APP-C 2016 中国峰会

APP-中国作为全球领先的造纸和纸浆制造商，多年来一直秉持可持续发展战略。在为消费者提供高质量纸产品的同时，我们也致力于解决日益增长的对纸的需求与环境保护和资源短缺之间的矛盾。APP-中国将继续通过分享经验、交流技术、传播 expertise，引领同行采取“绿色发展”方式，驱动造纸制造商成为解决资源短缺、环境污染、经济挑战等问题的规划者和实践者。

APP-中国将继续通过分享经验、交流技术、传播 expertise，引领同行采取“绿色发展”方式，驱动造纸制造商成为解决资源短缺、环境污染、经济挑战等问题的规划者和实践者。



APP-C 2016 中国峰会

APP-中国作为全球领先的造纸和纸浆制造商，多年来一直秉持可持续发展战略。在为消费者提供高质量纸产品的同时，我们也致力于解决日益增长的对纸的需求与环境保护和资源短缺之间的矛盾。APP-中国将继续通过分享经验、交流技术、传播 expertise，引领同行采取“绿色发展”方式，驱动造纸制造商成为解决资源短缺、环境污染、经济挑战等问题的规划者和实践者。

APP-中国将继续通过分享经验、交流技术、传播 expertise，引领同行采取“绿色发展”方式，驱动造纸制造商成为解决资源短缺、环境污染、经济挑战等问题的规划者和实践者。

“

As a global leading pulp and paper manufacturer, APP-China has vigorously carried out a sustainable development strategy for many years. While we provide consumers with quality paper products, we are also dedicated to solving the contradiction between growing demand for paper and environmental protection and scarcity of resources. APP-China will continue to make China become a 'powerful paper making country' by sharing our experience, exchanging technologies, spreading expertise, leading peers to take a 'green development' approach, and driving paper manufacturers to become plan makers and practitioners to solve the problems of scarcity of resources, environmental pollution, economic challenges, etc.

”

2025

2025 2026 2027 2028 2029 2030

2025 2026 2027 2028 2029 2030

2025 2026 2027 2028 2029 2030

APP-C APP-D APP-E APP-F APP-G APP-H APP-I APP-J APP-K APP-L APP-M APP-N APP-O APP-P APP-Q APP-R APP-S APP-T APP-U APP-V APP-W APP-X APP-Y APP-Z APP-AA APP-AB APP-AC APP-AD APP-AE APP-AF APP-AG APP-AH APP-AI APP-AJ APP-AM 2016

2016 2017 2018 2019 2020 2021 2022 2023 2024 2025 2026 2027 2028 2029 2030

2016 2017 2018 2019 2020 2021 2022 2023 2024 2025 2026 2027 2028 2029 2030

2016 2017 2018 2019 2020 2021 2022 2023 2024 2025 2026 2027 2028 2029 2030

2016 2017 2018 2019 2020 2021 2022 2023 2024 2025 2026 2027 2028 2029 2030

2016 2017 2018 2019 2020 2021 2022 2023 2024 2025 2026 2027 2028 2029 2030

2016 2017 2018 2019 2020 2021 2022 2023 2024 2025 2026 2027 2028 2029 2030

2016 2017 2018 2019 2020 2021 2022 2023 2024 2025 2026 2027 2028 2029 2030

2025

APP-C APP-D APP-E APP-F APP-G APP-H APP-I APP-J APP-K APP-L APP-M APP-N APP-O APP-P APP-Q APP-R APP-S APP-T APP-U APP-V APP-W APP-X APP-Y APP-Z APP-AA APP-AB APP-AC APP-AD APP-AE APP-AF APP-AG APP-AH APP-AI APP-AJ APP-AM

2025 2026 2027 2028 2029 2030

86%

2025 2026 2027 2028 2029 2030

2025 2026 2027 2028 2029 2030

2025 2026 2027 2028 2029 2030

ل. ١٠ - PEFG-C CC (١٠٠%) E (١٠٠%) APP-C (١٠٠%)

N	APP-C (A)	C (N)
1	مبيعات (١٠٠%)، وديان	١٠٠,٠٠٠ / ١٠٠,٠٠٠ -024
2	مبيعات (١٠٠%)، وديان	١٠٠,٠٠٠ / ١٠٠,٠٠٠ -02
٣	مبيعات (١٠٠%) (١٠٠%) (١٠٠%)، وديان	١٠٠,٠٠٠ / ١٠٠,٠٠٠ -0 28
4	مبيعات (١٠٠%) & (١٠٠%)، وديان	١٠٠,٠٠٠ / ١٠٠,٠٠٠ -0 4
5	مبيعات (١٠٠%) & (١٠٠%)، وديان	١٠٠,٠٠٠ / ١٠٠,٠٠٠ -0 0
٦	مبيعات (١٠٠%)، وديان	١٠٠,٠٠٠ / ١٠٠,٠٠٠ -04 2
٧	مبيعات (١٠٠%) (١٠٠%) (١٠٠%)، وديان	١٠٠,٠٠٠ / ١٠٠,٠٠٠ -05
٨	مبيعات (١٠٠%)، وديان	١٠٠,٠٠٠ / ١٠٠,٠٠٠ -0 28
٩	مبيعات (١٠٠%)، وديان	١٠٠,٠٠٠ / ١٠٠,٠٠٠ -0 4
10	مبيعات (١٠٠%) & (١٠٠%)، وديان	١٠٠,٠٠٠ / ١٠٠,٠٠٠ -0805
11	مبيعات (١٠٠%)، وديان	١٠٠,٠٠٠ / ١٠٠,٠٠٠ -١
12	مبيعات (١٠٠%) (١٠٠%)، وديان	١٠٠,٠٠٠ / ١٠٠,٠٠٠ -14
1٣	مبيعات (١٠٠%) (١٠٠%)، وديان	١٠٠,٠٠٠ / ١٠٠,٠٠٠ -14 4
14	مبيعات (١٠٠%) (١٠٠%)، وديان	١٠٠,٠٠٠ / ١٠٠,٠٠٠ -14 5
15	مبيعات (١٠٠%) (١٠٠%)، وديان	١٠٠,٠٠٠ / ١٠٠,٠٠٠ -14 ١
1٦	مبيعات (١٠٠%) & (١٠٠%)، وديان	١٠٠,٠٠٠ / ١٠٠,٠٠٠ -154
١٧	مبيعات (١٠٠%)، وديان	١٠٠,٠٠٠ / ١٠٠,٠٠٠ -1 40

تتمثل في زيادة مبيعات الشركة في جميع المجالات، حيث بلغت المبيعات في عام 2017، 607,244 مليون ريال، مقارنة بـ 464,784 مليون ريال في عام 2015، و574,425 مليون ريال في عام 2014.

في عام 2017، تم تحقيق صافي الربح بعد الضرائب وقيمة الممتلكات غير الملموسة بقيمة 17.1% من إجمالي المبيعات، مقارنة بـ 15.4% في عام 2015، و14.4% في عام 2014.

في عام 2017، تم تحقيق صافي الربح بعد الضرائب وقيمة الممتلكات غير الملموسة بقيمة **17.1%** من إجمالي المبيعات، مقارنة بـ 15.4% في عام 2015، و14.4% في عام 2014.

م. 10 - P (100%) M (100%)

تتمثل في زيادة مبيعات الشركة في جميع المجالات، حيث بلغت المبيعات في عام 2017، 607,244 مليون ريال، مقارنة بـ 464,784 مليون ريال في عام 2015، و574,425 مليون ريال في عام 2014.

P. (100%) M (100%) APP-C

2017	607,244
2015	464,784
2014	574,425

The Board of Directors is committed to the company's environmental and social performance. The Board has established the Environmental and Social Committee (ESC) to oversee the company's environmental and social performance. The ESC is responsible for reviewing and approving the company's environmental and social policies, and for monitoring the company's progress in implementing these policies. The Board also receives regular reports from the ESC on the company's environmental and social performance.

The Board of Directors is committed to the company's environmental and social performance. The Board has established the Environmental and Social Committee (ESC) to oversee the company's environmental and social performance. The ESC is responsible for reviewing and approving the company's environmental and social policies, and for monitoring the company's progress in implementing these policies. The Board also receives regular reports from the ESC on the company's environmental and social performance.

The Board of Directors is committed to the company's environmental and social performance. The Board has established the Environmental and Social Committee (ESC) to oversee the company's environmental and social performance. The ESC is responsible for reviewing and approving the company's environmental and social policies, and for monitoring the company's progress in implementing these policies. The Board also receives regular reports from the ESC on the company's environmental and social performance.

N 201 | *Environmental and Social Performance*

100%

N 201 | *Environmental and Social Performance*

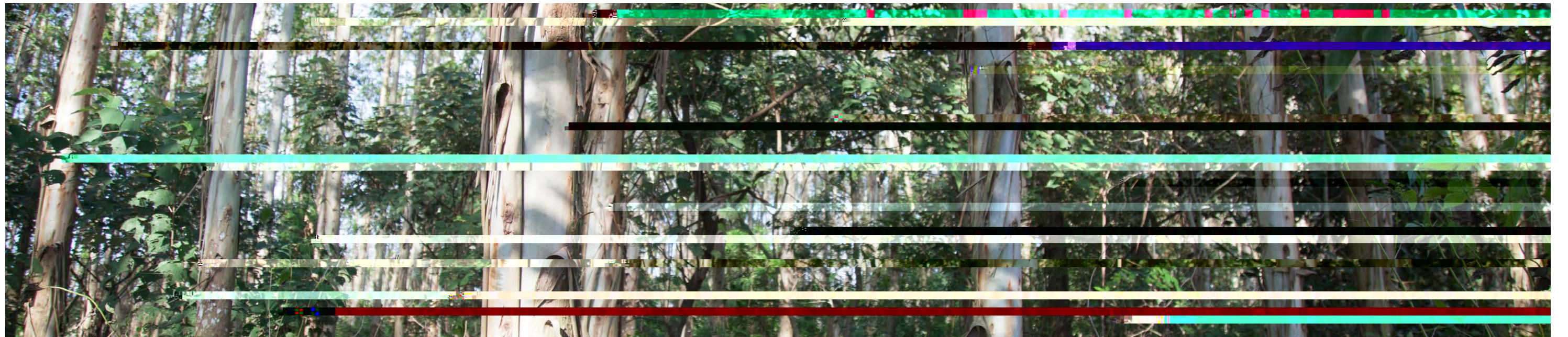
254,660.01



Table 1: APP-C, E, S, and C Performance

N	APP-C, E, S, and C	C (Value)	CFCC/PEFC/FMC	N
1	...	8,98	...	-0000
2	...	428	...	-00005
	...	44,0	...	-00000
4	...	820.4	...	-0000 1
5	...	1,8	...	-0000 1
	...	11,0	...	-00000
8	...	14,240	...	-000008
9	...	4,1	...	-0000 0
	...	2,45	...	-0000 0
10	...	,08	...	-0000 0
11	...	1, 42.5	...	-00000
12	...	42, 2.	...	-000018
Total		254,660.01		

The Board of Directors is committed to the company's environmental and social performance. The Board has established the Environmental and Social Committee (ESC) to oversee the company's environmental and social performance. The ESC is responsible for reviewing and approving the company's environmental and social policies, and for monitoring the company's progress in implementing these policies. The Board also receives regular reports from the ESC on the company's environmental and social performance.



2025-2026 2027-2028 2029-2030 2031-2032 2033-2034

2025-2026 2027-2028 2029-2030 2031-2032 2033-2034

2025-2026 2027-2028 2029-2030 2031-2032 2033-2034

2025-2026 2027-2028 2029-2030 2031-2032 2033-2034

2025-2026 2027-2028 2029-2030 2031-2032 2033-2034

M. D. S. D. P. P. C. C. C.



2025-2026 2027-2028 2029-2030 2031-2032 2033-2034

2025-2026 2027-2028 2029-2030 2031-2032 2033-2034

2025-2026 2027-2028 2029-2030 2031-2032 2033-2034

2025-2026 2027-2028 2029-2030 2031-2032 2033-2034

2025-2026 2027-2028 2029-2030 2031-2032 2033-2034

M. D. S. D. P. P. C. C. C.



... (text) ...

... (text) ...

... (text) ...

... (text) ...

... (text) ...



G H B O C L C L D C

... (text) ...

N 201 ...

... (text) ...

G H D A B P H K M

... (text) ...

N ... (text) ...

G H A C C M

... (text) ...

... (text) ...

N 201 ...



A E



... (text) ...

... (text) ...

... (text) ...

... (text) ...

G H A E C E
M S M

N 2015, the revenue of the company increased by 14.5% compared to 2014, reaching 1,455,880,000 VND. The revenue of the company in 2015, 1,455,880,000 VND, increased by 14.5% compared to 2014, 1,271,400,000 VND.

The revenue of the company in 2015, 1,455,880,000 VND, increased by 14.5% compared to 2014, 1,271,400,000 VND.

The revenue of the company in 2015, 1,455,880,000 VND, increased by 14.5% compared to 2014, 1,271,400,000 VND.

G H P G O B D
D O

N 2015, the revenue of the company increased by 14.5% compared to 2014, reaching 1,455,880,000 VND.

The revenue of the company in 2015, 1,455,880,000 VND, increased by 14.5% compared to 2014, 1,271,400,000 VND.

The revenue of the company in 2015, 1,455,880,000 VND, increased by 14.5% compared to 2014, 1,271,400,000 VND.



N 2015, the revenue of the company increased by 14.5% compared to 2014, reaching 1,455,880,000 VND.

The revenue of the company in 2015, 1,455,880,000 VND, increased by 14.5% compared to 2014, 1,271,400,000 VND.

APP-C 2014-2016

(in VND)

201	124,417,318
2015	120,477,308
2014	121,733,245

H J P & P H G H G H
H P

The revenue of the company in 2015, 1,455,880,000 VND, increased by 14.5% compared to 2014, 1,271,400,000 VND.

The revenue of the company in 2015, 1,455,880,000 VND, increased by 14.5% compared to 2014, 1,271,400,000 VND.

The revenue of the company in 2015, 1,455,880,000 VND, increased by 14.5% compared to 2014, 1,271,400,000 VND.



2014-2016 APP-C

	2014	2015	2016
Revenue	4,205,4	4,800,100,000	4,800,152,000
Operating expenses & taxes	4,851,1485	4,800,080,000	4,800,121,040
Operating income & taxes	1,454,2	12,424,5	1,455,550
Operating expenses & taxes	151,280,04	254,809,840	220,452,1
Operating income & taxes	4,205,4	25,14,000	240,511
Operating expenses & taxes	4,205,4	121,4,480	1,228,485
Operating income & taxes	4,598,0000	45,7802,1	48,4,280
Operating expenses & taxes	1,5,1,0000	1,1,1,1	4,12,22
Operating income & taxes	1,1,5	4,1,80	3,1,80,02

The revenue of the company in 2015, 1,455,880,000 VND, increased by 14.5% compared to 2014, 1,271,400,000 VND.

The revenue of the company in 2015, 1,455,880,000 VND, increased by 14.5% compared to 2014, 1,271,400,000 VND.

The revenue of the company in 2015, 1,455,880,000 VND, increased by 14.5% compared to 2014, 1,271,400,000 VND.

2014-2016 APP-C

(in VND)

201	92,621,594
2015	88,522,504
2014	107,303,658

CODE E

(in VND)

201	0.69
2015	0.33
2014	0.276

APP-C A A

(in VND)

201	12.23
2015	6.74
2014	8.46

CODE E

(in VND)

201	1.36
2015	1.20
2014	1.54

A A

(in VND)

201	21.87
2015	15.12
2014	21.91

(in VND)

201	21.87
2015	15.12
2014	21.91



) APP-C

M	52
P	54
C	55
O	56
E	59
C	60
P	61
P	63

▶ 2019年12月31日

▶ 2019年12月31日

2019年12月31日，公司资产总额为1,000,000,000.00元，负债总额为500,000,000.00元，所有者权益总额为500,000,000.00元。

2019年12月31日，公司资产总额为1,000,000,000.00元，负债总额为500,000,000.00元，所有者权益总额为500,000,000.00元。

2019年12月31日，公司资产总额为1,000,000,000.00元，负债总额为500,000,000.00元，所有者权益总额为500,000,000.00元。

2019年12月31日，公司资产总额为1,000,000,000.00元，负债总额为500,000,000.00元，所有者权益总额为500,000,000.00元。

▶ 2019年12月31日

F. 资产 (1,000,000,000.00)

2019年12月31日，公司资产总额为1,000,000,000.00元，其中流动资产为500,000,000.00元，非流动资产为500,000,000.00元。

M. 负债 (500,000,000.00)

2019年12月31日，公司负债总额为500,000,000.00元，其中流动负债为300,000,000.00元，非流动负债为200,000,000.00元。

P. 所有者权益 (500,000,000.00)

2019年12月31日，公司所有者权益总额为500,000,000.00元，其中实收资本为300,000,000.00元，未分配利润为200,000,000.00元。

▶ 2019年12月31日

2019年12月31日，公司资产总额为1,000,000,000.00元，负债总额为500,000,000.00元，所有者权益总额为500,000,000.00元。

2019年12月31日，公司资产总额为1,000,000,000.00元，负债总额为500,000,000.00元，所有者权益总额为500,000,000.00元。

▶ 2019年12月31日

E. 资产 (1,000,000,000.00)

2019年12月31日，公司资产总额为1,000,000,000.00元，其中流动资产为500,000,000.00元，非流动资产为500,000,000.00元。

P. 负债 (500,000,000.00)

2019年12月31日，公司负债总额为500,000,000.00元，其中流动负债为300,000,000.00元，非流动负债为200,000,000.00元。

E. 所有者权益 (500,000,000.00)

2019年12月31日，公司所有者权益总额为500,000,000.00元，其中实收资本为300,000,000.00元，未分配利润为200,000,000.00元。

2019年12月31日，公司资产总额为1,000,000,000.00元，负债总额为500,000,000.00元，所有者权益总额为500,000,000.00元。

2019年12月31日，公司资产总额为1,000,000,000.00元，负债总额为500,000,000.00元，所有者权益总额为500,000,000.00元。

▶ 2019年12月31日

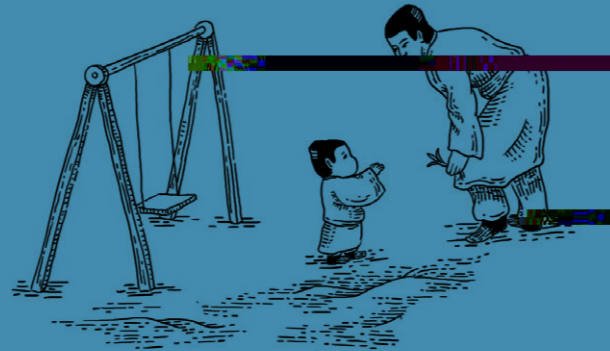
2019年12月31日，公司资产总额为1,000,000,000.00元，负债总额为500,000,000.00元，所有者权益总额为500,000,000.00元。

2019年12月31日，公司资产总额为1,000,000,000.00元，负债总额为500,000,000.00元，所有者权益总额为500,000,000.00元。

APP-C		
D. 资产 (1,000,000,000.00)	M. 负债 (500,000,000.00)	M. 所有者权益 (500,000,000.00)
流动资产	流动负债	实收资本
非流动资产	非流动负债	未分配利润

“乐·康·爱·心·社·区·行·动”

2016年，乐·康·爱·心·社·区·行·动项目在全国范围内开展了多项公益活动。项目旨在通过组织志愿者走进社区，为弱势群体提供关爱和支持。项目在全国范围内开展了多项公益活动，旨在通过组织志愿者走进社区，为弱势群体提供关爱和支持。项目在全国范围内开展了多项公益活动，旨在通过组织志愿者走进社区，为弱势群体提供关爱和支持。



2014年，乐·康·爱·心·社·区·行·动项目在全国范围内开展了多项公益活动。项目旨在通过组织志愿者走进社区，为弱势群体提供关爱和支持。项目在全国范围内开展了多项公益活动，旨在通过组织志愿者走进社区，为弱势群体提供关爱和支持。



2015年，乐·康·爱·心·社·区·行·动项目在全国范围内开展了多项公益活动。项目旨在通过组织志愿者走进社区，为弱势群体提供关爱和支持。项目在全国范围内开展了多项公益活动，旨在通过组织志愿者走进社区，为弱势群体提供关爱和支持。



In early November 2016, the Huang Yicong Foundation and the Humana Group visited eight children's classes, including Mowo and Banzhe.

“聚光·点亮·梦想——无声课堂”

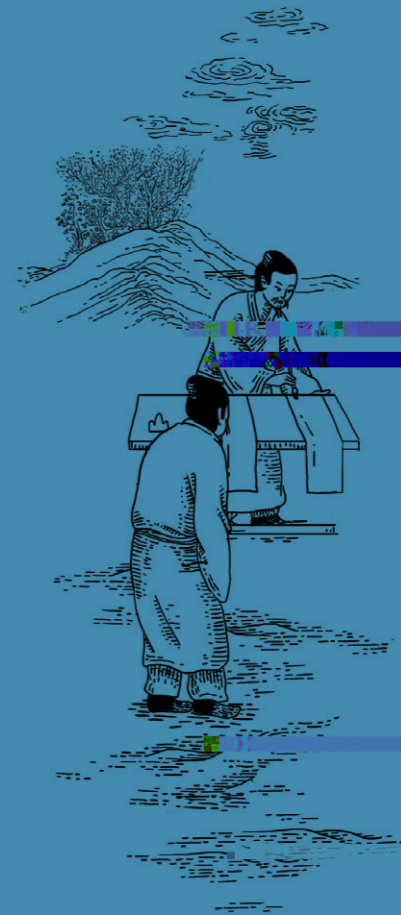
2016年7月，2016年夏季“聚光·点亮·梦想——无声课堂”圆满结束。48名来自上海、陕西、南京、天津、云南等地的学生完成了为期7天的淘宝网店设计培训，并开始了他们的电商创业。

“聚光·点亮·梦想——无声课堂”项目旨在通过组织志愿者走进社区，为弱势群体提供关爱和支持。项目在全国范围内开展了多项公益活动，旨在通过组织志愿者走进社区，为弱势群体提供关爱和支持。

“聚光·点亮·梦想——无声课堂”项目旨在通过组织志愿者走进社区，为弱势群体提供关爱和支持。项目在全国范围内开展了多项公益活动，旨在通过组织志愿者走进社区，为弱势群体提供关爱和支持。



In July 2016, the 2016 summer class of "Jingguang Lights up a Dream - Silent Classroom" was completed. 48 students from Shanghai, Shaanxi, Nanjing, Tianjin, Yunnan and other places completed a 7-day training course on Taobao website design, and started their e-businesses.



Environmental Performance

Environmental Performance

2016 Environmental, Social and Governance Report

Unit	2015	2016
Greenhouse gas emissions (Scope 1 & 2)	10,000	↓ 1,111.20
Water consumption		124,471.10
Waste generated		2,215.4
Energy consumption (kWh)		12.2
Energy consumption (kWh/employee)		21.8
Accidents due to environmental factors	0	0
Accidents due to safety factors	1.25	1.25
Environmental fines	10.2	10.2
Environmental lawsuits	5.4	5.4

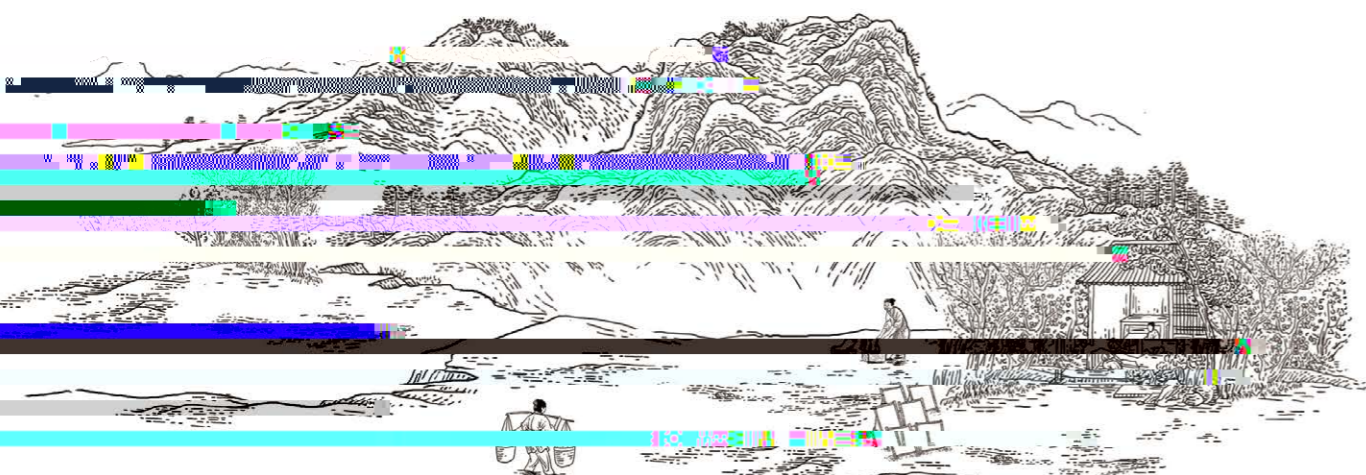
Economic Performance

Unit	2015	2016
Revenue	1001.0	1,100.2
Operating profit	1001.0	22.52
Net profit	1001.0	4.1
Employee turnover	1001.0	1.10
Customer satisfaction	1001.0	24.1

Social Performance

2016 Environmental, Social and Governance Report

Unit	2015	2016
Employee turnover		21051
Employee satisfaction	%	↑ 2%
Customer satisfaction	%	20%
Supplier satisfaction		101
Supplier satisfaction (0-100)	%	240%
Supplier satisfaction (0-50)	%	4.1%
Supplier satisfaction (50-100)	%	2.1%
Supplier satisfaction (100-150)	%	22.5%
Supplier satisfaction (150-200)	%	0%
Supplier satisfaction (200-250)	%	1%
Supplier satisfaction (250-300)	%	2.4%
Supplier satisfaction (300-350)	%	10.0%
Supplier satisfaction (350-400)	%	12.5%
Supplier satisfaction (400-450)	%	5.5%
Supplier satisfaction (450-500)		40
Supplier satisfaction (500-550)		1010
Supplier satisfaction (550-600)		44
Supplier satisfaction (600-650)		4
Supplier satisfaction (650-700)		1
Supplier satisfaction (700-750)		115.10
Supplier satisfaction (750-800)	10,000	42.5
Supplier satisfaction (800-850)		1055.25
Supplier satisfaction (850-900)		0
Supplier satisfaction (900-950)		1.4
Supplier satisfaction (950-1000)		40.22
Supplier satisfaction (1000-1050)		1.10
Supplier satisfaction (1050-1100)	10,000	1.10





ASSURANCE STATEMENT

SGS-CSTC STANDARDS TECHNICAL SERVICES CO., LTD. SHANGHAI BRANCH'S REPORT ON SUSTAINABILITY ACTIVITIES IN THE SINAR MAS PAPER (CHINA) INVESTMENT CO., LTD.'S SUSTAINABILITY REPORT 2016

NATURE AND SCOPE OF THE ASSURANCE

SGS-CSTC Standards Technical Services Co., Ltd. Shanghai Branch (hereafter as "SGS") was engaged by Sinar Mas Paper (China) Investment Co., Ltd. (hereafter as "APP-China") to conduct an independent assurance of the 2016 SUSTAINABILITY REPORT (2016 CSR Report). The scope of the assurance, based on the SGS Sustainability Report Assurance methodology, including the text and data, is as follows: APP-China Head Office, Gold East Paper (Jiangsu) Co., Ltd., Ningbo Zhonghua Paper Co., Ltd., Ningbo Asia Pulp & Paper Co., Ltd., Hainan Jinhai Pulp & Paper Co., Ltd., Hainan Gold Hongye Paper Co., Ltd., Hainan Gold Shengpu Paper Co., Ltd., which were on-site assurance, as well as, Gold Hongye Paper Group Co., Ltd., Gold Huasheng Paper (Suzhou Industrial Park) Co., Ltd., Guangxi Jingui Pulp & Paper Co., Ltd., APP China Forestry Business Headquarters, Hainan, Guangxi and Guangdong Business Units, and Lancang, Ganzhou. Data and information of other companies were not included in this assurance process.

The information in the 2016 CSR Report of APP-China and its presentation are the responsibility of the management of APP-China. SGS has not been involved in the preparation of any of the material included in the 2016 CSR Report.

Our responsibility is to express an opinion on the text, data, graphs and statements within the scope of assurance set out below with the intention to inform all APP-China's stakeholders.

- This report has been assured at an **adequate level of scrutiny** using our protocols for:
- evaluation of content veracity; and
 - evaluation of the report against the Global Reporting Initiative Sustainability Reporting Guidelines (2013).

The assurance comprised a combination of pre-assurance research, interviews with the management and employees, documentation and record review.

Financial data drawn directly from independently audited financial accounts has not been checked back to source as part of this assurance process.

STATEMENT OF INDEPENDENCE AND COMPETENCE

SGS is the world's leading inspection, verification, testing and certification company with more than 80,000 employees, SGS operates a network of over 1,650 offices and laboratories around the world, providing the services includes the certification of management systems and services, quality, environmental, social and ethical auditing and training; environmental, social and sustainability report assurance. SGS affirms our independence from APP-China, being free from bias and conflicts of interest with APP-China, its subsidiaries and stakeholders.

The assurance team was assembled based on their knowledge, experience and qualifications for this assignment, and comprised auditors with CSR Lead Assuror, SAI Registered SA8000 Lead Auditor, CCAA Registered ISO 14001 Auditor and OHSAS 18001 Auditor.

ASSURANCE OPINION

On the basis of the methodology described and the verification work performed, we are satisfied that the information and data contained within 2016 CSR Report verified is accurate, reliable and provides a fair and balanced representation of APP-China's sustainability activities in 2016. The assurance team is of the opinion that the Report can be used by the Reporting Organization's Stakeholders.

We believe that APP-China has chosen an appropriate level of option in accordance to all requirements in core option of GRI G4 2013, and disclosed part of indicators in comprehensive option according to the Guidelines.



GLOBAL REPORTING INITIATIVE REPORTING GUIDELINES (G4 2013) CONCLUSIONS, FINDINGS AND RECOMMENDATIONS

In our opinion the APP-China CSR Report 2016 is presented in accordance with the core option for GRI G4 2013 and fulfills all the required content and quality criteria.

Stakeholder Inclusiveness

APP-China establishes a diversified stakeholder dialogue mechanism to ensure the effective engagement of stakeholders in sustainability management, and integrates sustainability behaviors into its decisions and activities. APP-China is focusing on biodiversity, effectively addressing community issues, and optimizing the supplier's sustainable development management, in order to ensure that the commitment to APP's Sustainability Roadmap Vision 2020" is implemented.

Sustainability Context

APP-China considers these factors in terms of data disclosure by analyzing from the economic, environmental and social stakeholders.

Materiality

APP-China continually conducts a stakeholder survey to identify current material aspects, in order to ensure the materiality and comprehensiveness of the concerned issues, which setting as the contents of sustainability report for the year and sustainability activities for the future. In response to the "Made in China 2025" proposed by the Chinese Government, APP-China has developed an "Industrial 4.0 Roadmap" to promote the overall development of the domestic paper industry.

Completeness

APP-China uses the social responsibility subjects as framework to disclose relevant information and data, and fully reflects the significant economic, environmental and social impacts.

Balance

APP-China actively discloses its own positive and negative performance based on the expectations of stakeholders, and gives stakeholders more objective performance of social responsibility performance.

Comparability

APP-China shows the historical data comparison to demonstrate the trends and terms that help readers know the improvement of year-to-year performance.

Accuracy

APP-China's reporting mechanism is objective and complete, which can disclose more information to stakeholders and reveal that the concept of social responsibility management is consistent with the expectations of stakeholders.

Timeliness

The data APP-China disclosed are in the reporting cycle, and the stakeholders can obtain information to make a reasonable decision in a timely manner.

Clarity

The report is clear and can be understood by stakeholders who have a reasonable understanding of APP-China and its industry. APP-China is taking into account the utilization and type of information, and using a number of descriptions, charts and pictures and other forms while disclosure of information.

Reliability

The data and information can be traced and verified by internal collection, recording, compiling, analysis and disclosure to ensure the reliability of the report.

Signed:

For and on behalf of SGS-CSTC Standards Technical Services Co., Ltd. Shanghai Branch

Ben Tsang
Director, China and Hong Kong
Certification and Business Enhancement
15 August, 2017

B-11/F, No.900, Yishan Road, Xuhui District, Shanghai, P. R. China
WWW.SGSGROUP.COM.CN

2025-2026 D. 10000		P. 10000	O. 10000	E. 10000	A. 10000
2025-2026 D. 10000					
2025-2026 D. 10000					
O. 10000	= 4- D		5	/	—
H. 10000	= 4-	2025-2026 D. 10000	5	/	—
A. 10000	= 4- 1	2025-2026 D. 10000	/	/	—
E. 10000	= 4- D		55	/	—
	= 4-	2025-2026 D. 10000	55	/	—
	= 4- 10	2025-2026 D. 10000	55	/	—
D. 10000	= 4- D		54	/	—
A. 10000	= 4- 12	2025-2026 D. 10000	5	/	—
O. 10000					
2025-2026 D. 10000					
F. 10000	= 4-		2-2	/	—
A. 10000	D-				
A. 10000	= 4- 12	2025-2026 D. 10000	/	/	—
B. 10000					
2025-2026 D. 10000					
L. 10000	= 4y		2-1	/	—
C. 10000	D-		1-		
	= 4y 1	2025-2026 D. 10000	2-2	/	—
	= 4y 2	2025-2026 D. 10000	/	/	—
A. 10000	= 4y		20-21	/	—
A. 10000	D-				
	= 4y 4	2025-2026 D. 10000	20-21	/	—
	= 4y 5	2025-2026 D. 10000	/	/	—
2025-2026 D. 10000					
C. 10000	= 4- D		1	/	—
H. 10000	= 4- 2	2025-2026 D. 10000	/	/	—
A. 10000					
P. 10000	= 4-D		5	/	—
A. 10000					
B. 10000	= 4-	2025-2026 D. 10000	2-	/	—
	= 4- 5	2025-2026 D. 10000	1	/	—

