

FOREWORD



7

"

"

"

"

APP

"

"

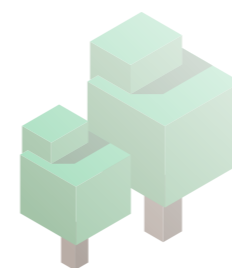
APP

"

"

APP

APP



CONTENTS

001

004

005

APP

010

2021

MBOS

CFCC/PEFC

T V

023

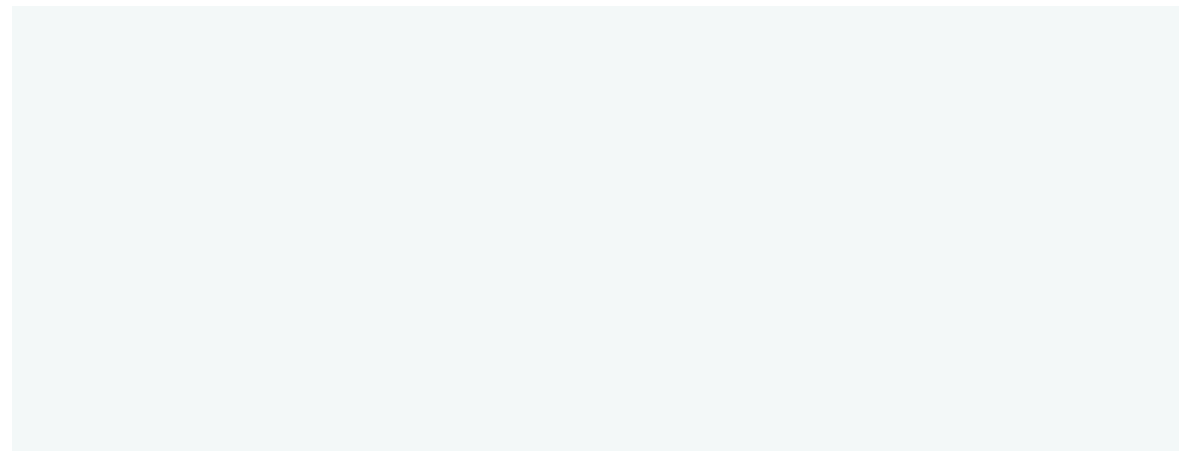
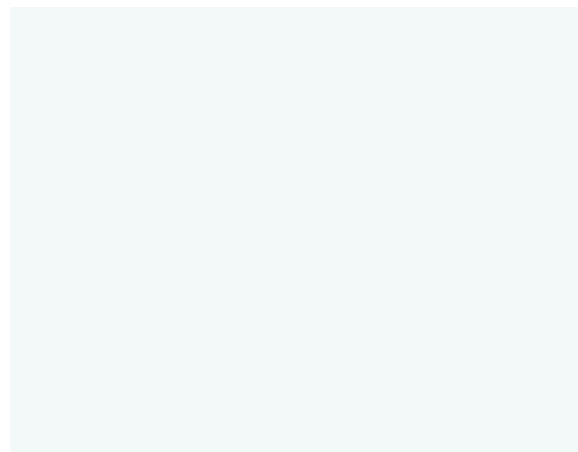
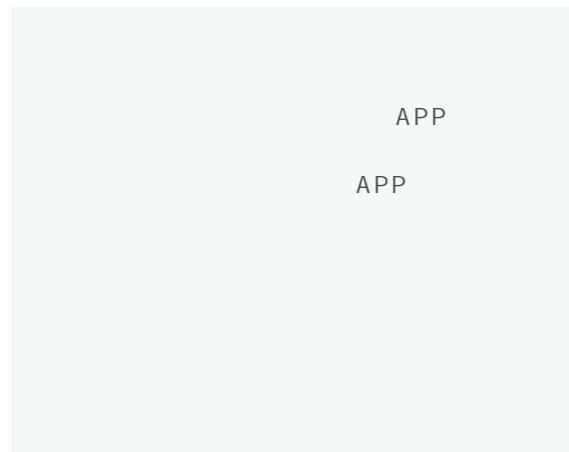
028

APP

034

036

表



APP



" "

" "

APP

APP

APP

2020 10 " "

APP

APP

" APP

" "

"

"

"

" " 30% "

"

" " 410

"

APP

3200

APP

" 2030

OEE

APP

2019 " " APP

23.4%

32.25%

APP

2014

APP

80MW

9000

2.8

7.6

APP

35%

50%

50%

OEE

" "

" " ---

"

"

11

6

APP

SOP

"

"

AGV

30%

"

"

"

"

APP

1.6

APP

"

"

11

" "

"

"

"

" APP

1995 26

—

2020

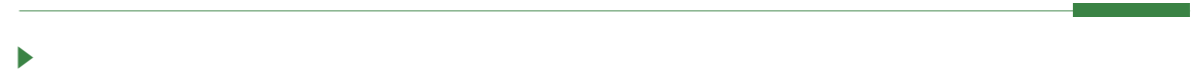
APP

26.74

4239.51

APP

APP



9 5 , " " " " " "

2021

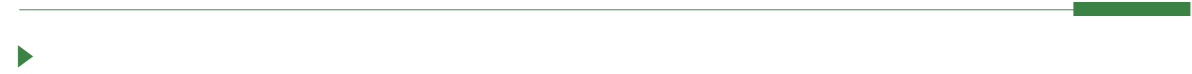
5 20

" " " "

" 2021 "

5 27

2020	1	35
7 20		
	APP	7 21
		21946
27933		15402
	519	
	1000	APP



7 1 100

30 1992 APP

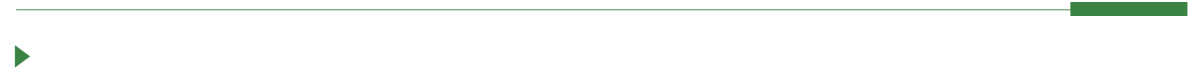
APP

APP

APP



6	26	"	"						
	APP				450				
	8500		396			"	4.0+	"	5G
		APP							6
				"	"	"	"		APP*
				"	"	"	"		APP
				"	"	"	"		"
					2022	5			
	78								5



4 24 13 " "

2

16

4 25

920

1000

16

188

30%

5 30

6 5

"

44

9

406 ▲

406

DIY

DIY

" ▲

+ "

"

"

▲

01

" "

5 20 2021 " "

" "

" "

" 2021

APP

APP

▲

02

8 30 APP

" "

▲

01

" "

▶

6 3 APP
20

" "

20

▲

02

▶

2021 6 20

" "

EHS

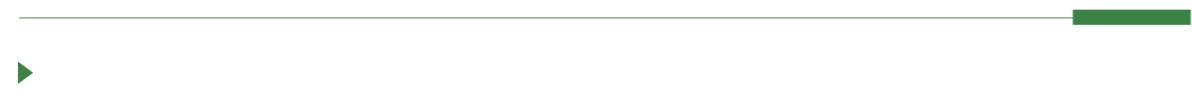
" "

3663

" "

▲





2020 7 14 .
 .
 150 MBOS

7 2021
 MBOS

7 18 2021
 MBOS "

" 8 MBOS

CEO office

head

CEO office head

7 23 2021
 MBOS "
 MBOS "

5 24 CFCC

8:30 FBU

SD

GB/T 28951-2012
 3.4 3.5 3.9
 3.1-3.3

3.6-3.8

4

4

5 25-26

RD5 EP0077
 5 27

2011 10 CFCC

FBU

OKR

" 2030
" 2060
" 75
"
"
"
"
"
"
" 30
" " " " "
" 1
" Ç
"
"
"
"
"

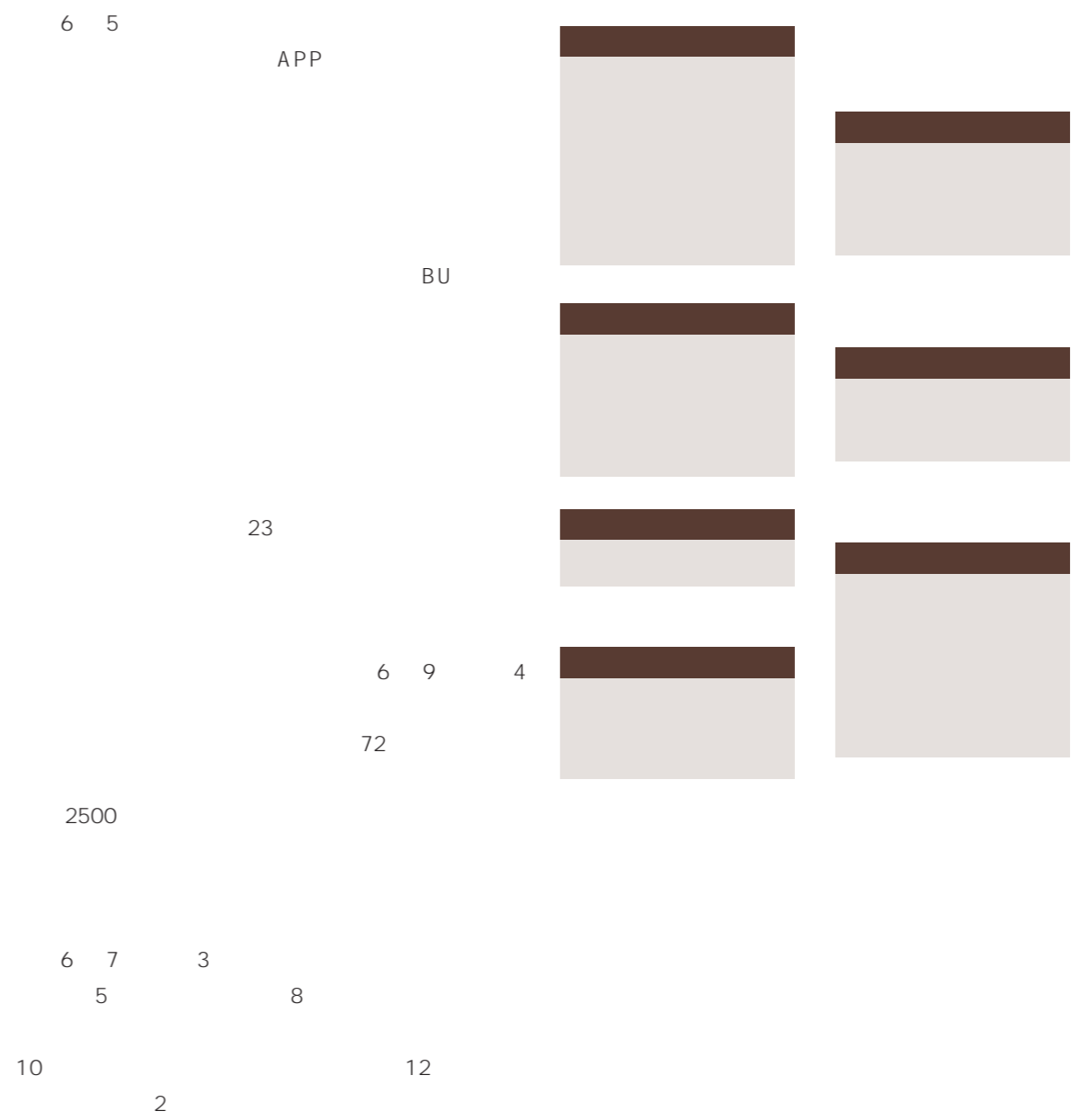
70
0.2

20%
20%
80%

"

"

" "





8 12 "

"

8 11 3
8 12

200

640

8 11 15 12 2

20 640

12

4-5 4

8 12

" "

" "

3 " "

" "

2012

OKI

OKI

OKI



闲话陕西面食

3000

“

CROSS SDA 8.5 TEU 11
TEU

“ biangbiang”

12 TEU

“ ” “ ”

.....

